



# El Dorado County Fire Protection District

October 2024

## Run Statistics – Engines & Medics



### Engine Companies:

Engine 17: 85

Engine 19: 61

Engine 25: 233

Engine 28: 113

Engine 72: 49

**Total Responses: 524**

### Medic Units:

Medic 17: 222

Medic 19: 200

Medic 25: 276

Medic 28: 255

Medic 49: 262

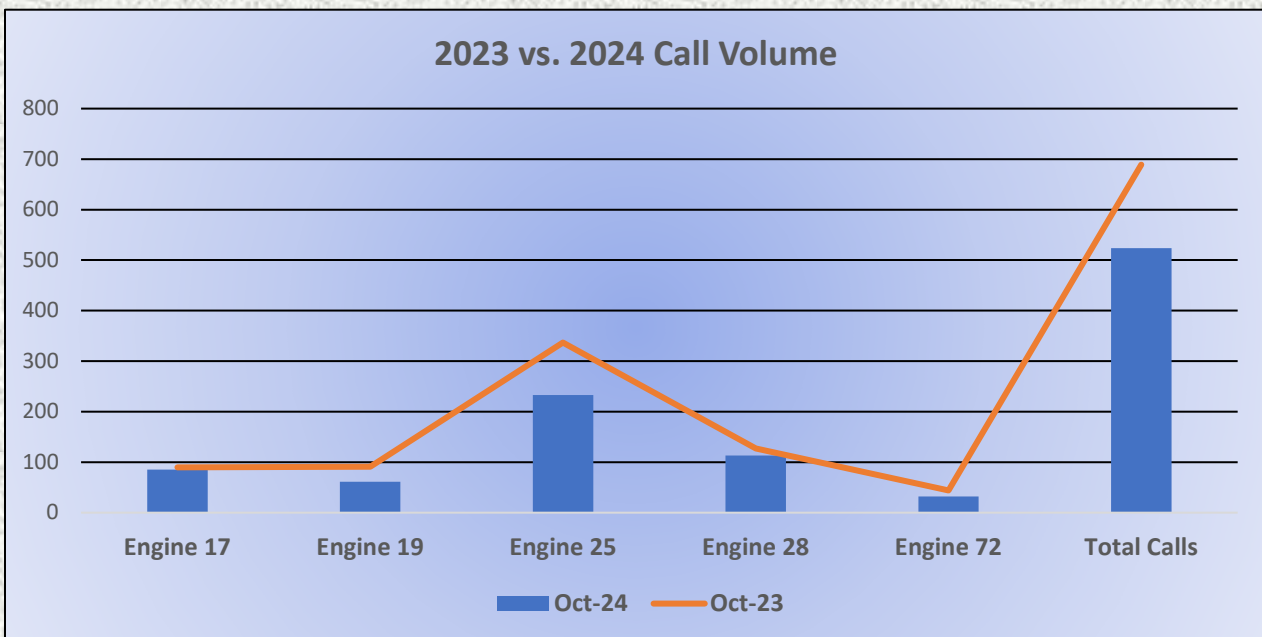
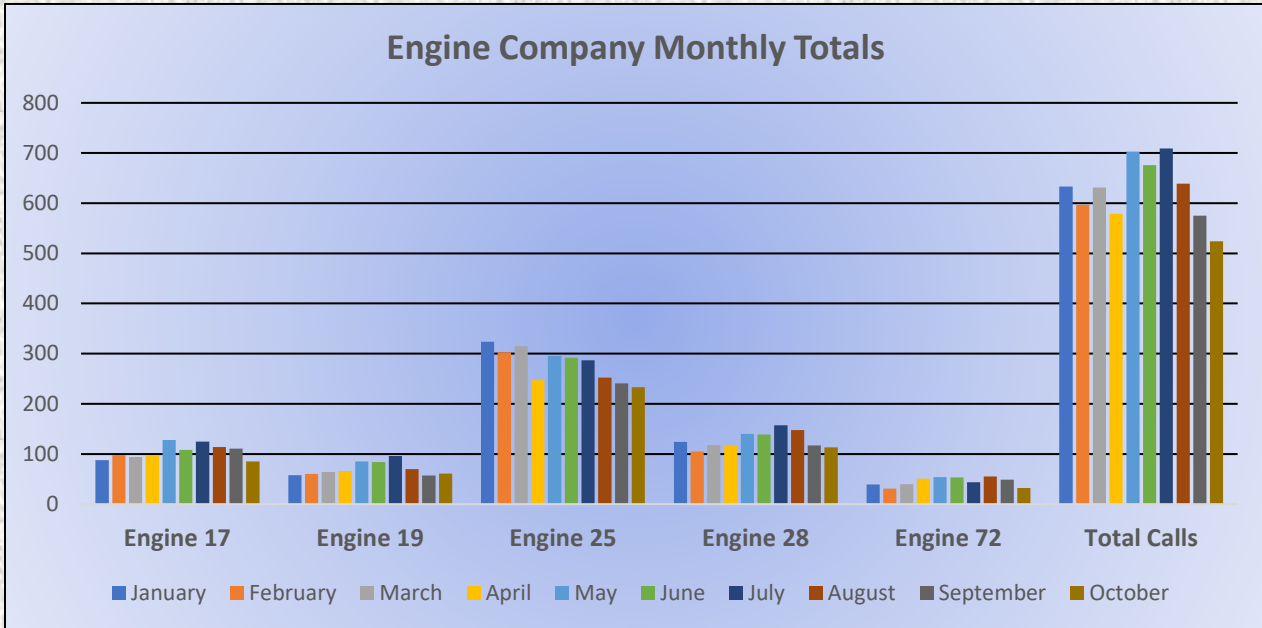
**Total Responses: 1,215**





# El Dorado County Fire Protection District

## Monthly Run Statistics and Yearly Comparison October 2024 Engine Companies and Medic Units

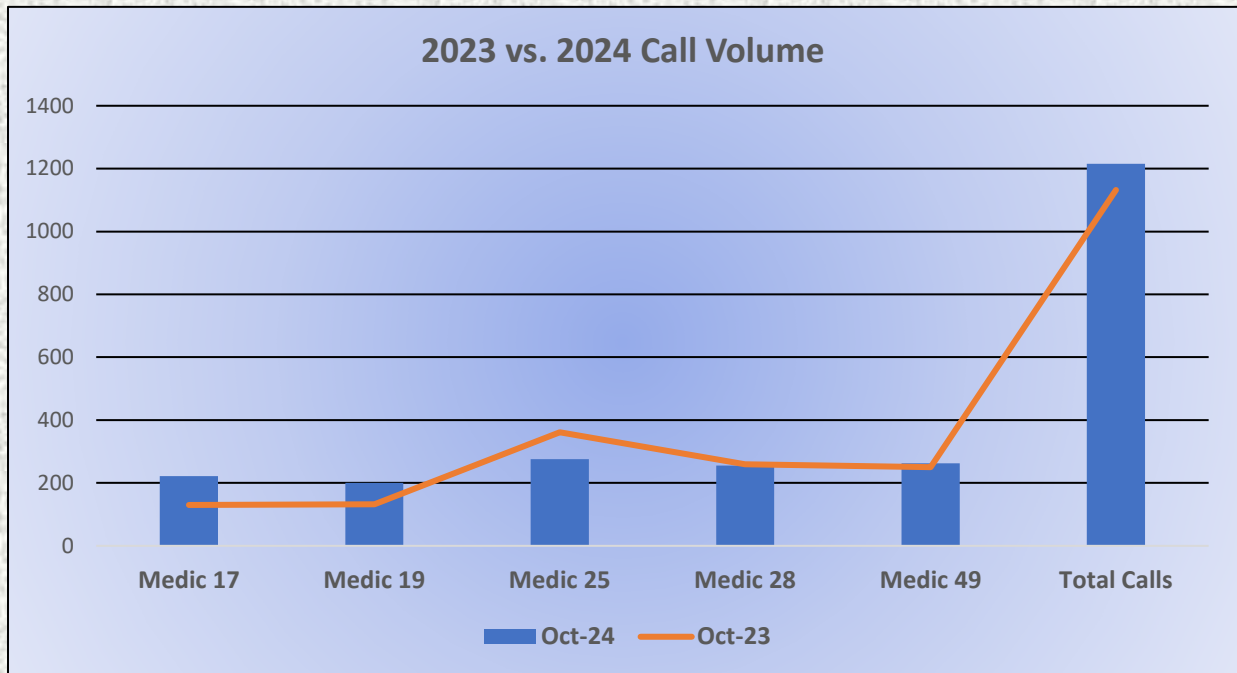
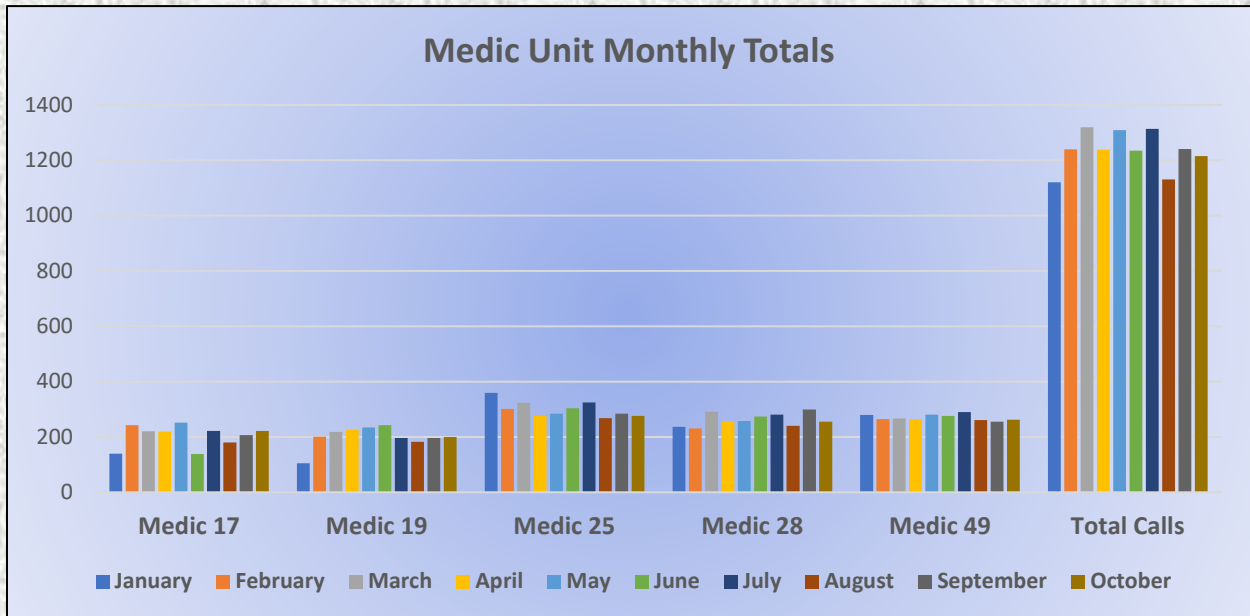






# El Dorado County Fire Protection District

## Monthly Run Statistics and Yearly Comparison October 2024 Engine Companies and Medic Units





# El Dorado County Fire Protection District

## Monthly Run Statistics and Yearly Comparison October 2024 Engine Companies and Medic Units



October 1 - October 31, 2024  
YTD January 1 - October 31  
Lifetime Since June 2021

CA - El Dorado County Fire Protection District  
Safety Cloud® Report

### Alert Totals

Drivers Alerted

**431**

YTD 3,722  
Lifetime 42,948

R2R Alerts sent

**0**

YTD 0  
Lifetime 0

R2R Alerts Received

**0**

YTD 0  
Lifetime 0

### Incident Totals

Total Incidents

**35**

YTD 253  
Lifetime 964

Average Time On-Scene

**28.7 min**

YTD 20.3 min  
Lifetime 90.9 min

### Run Totals

Total Runs

**64**

YTD 631  
Lifetime 2,897

Total Responding Time

**277 min**

YTD 2,790 min  
Lifetime 12,058 min

Average Time-to-Scene

**4.3 min**

YTD 4.4 min  
Lifetime 4.2 min

#### Drivers Alerted

Total drivers alerted; based on HAAS Alert enabled applications.

#### Average Time On-Scene

Average time duration per incident.

#### R2R Alerts Sent

Total number of Responder-to-Responder Alerts sent to nearby emergency vehicles.

#### Total Runs

Total times a vehicle was dispatched to an incident with lights engaged for at least 1+ minute.

#### R2R Alerts Received

Total number of Responder-to-Responder Alerts received by your emergency vehicles.

#### Total Responding Time

Total time vehicles/apparatus spent traveling to dispatched calls with lights engaged.

#### Total Incidents

Total number of times at least one vehicle arrived on-scene with lights engaged for 2+ minutes.

#### Average Time-to-Scene

Average time it took for dispatched vehicle to arrive on-scene.





## El Dorado County Fire Protection District



### *Station 25 Run Statistics October 2024*

#### **ENGINE 25: 233 Total Calls**

Medical Aid- 168  
Fire- 10  
Traffic Collision- 14  
Public Assist - 15  
Misc. – 24  
Move/Cover– 2

#### **MEDIC 25: 276 Total Calls**

Medical Aid- 209  
Fire- 7  
Traffic Collision- 17  
Transfer -13  
Misc.- 3  
Move/Cover - 27



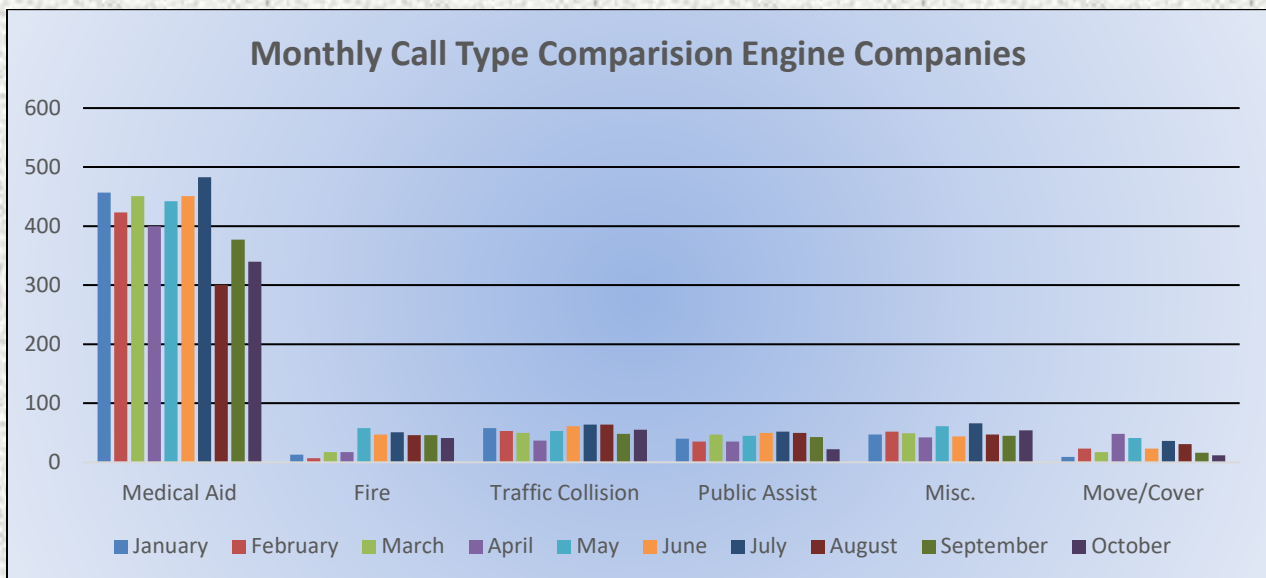
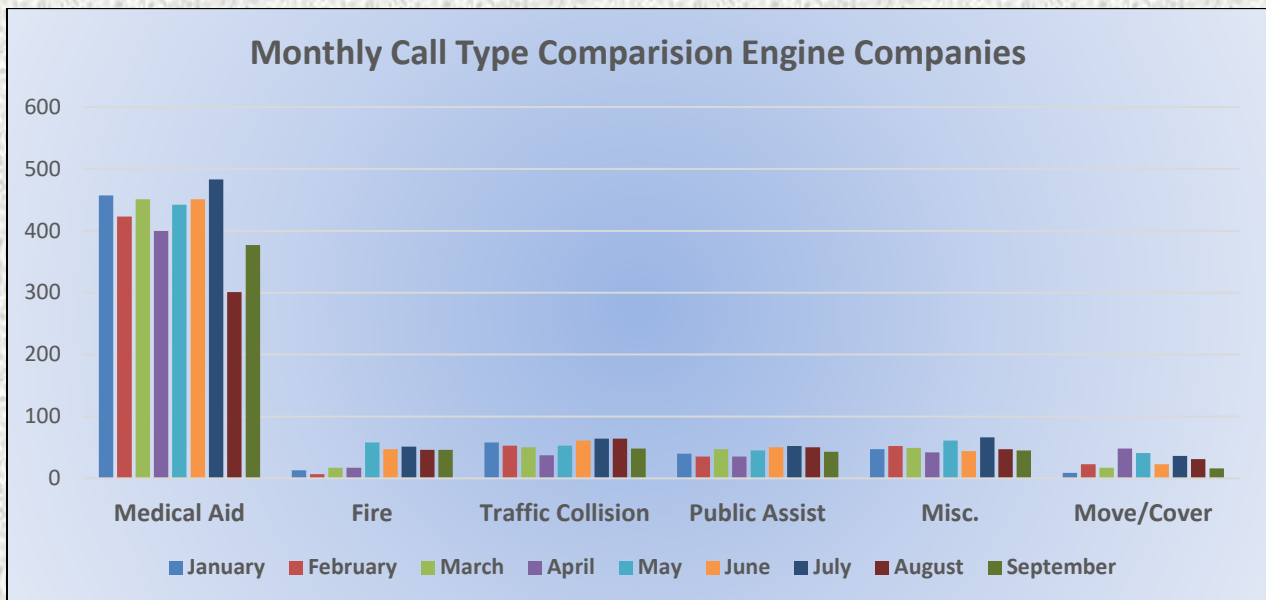


# El Dorado County Fire Protection District



## Monthly Run Statistics and Call Break Down September 2024 Engine Companies and Medic Units

Total Responses for Engine Companies: 524



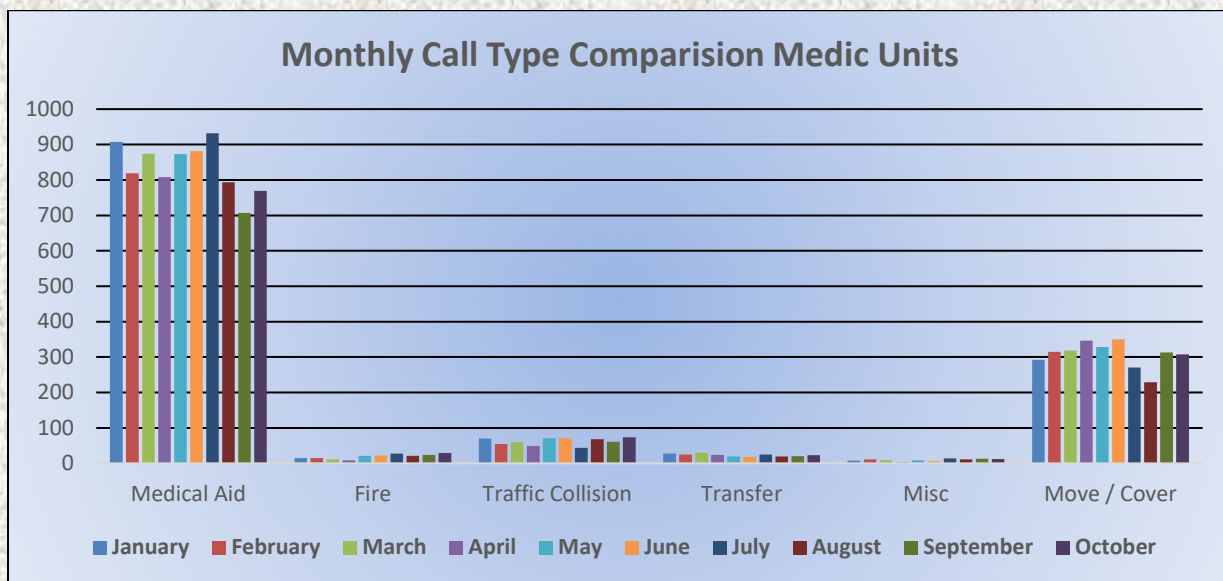
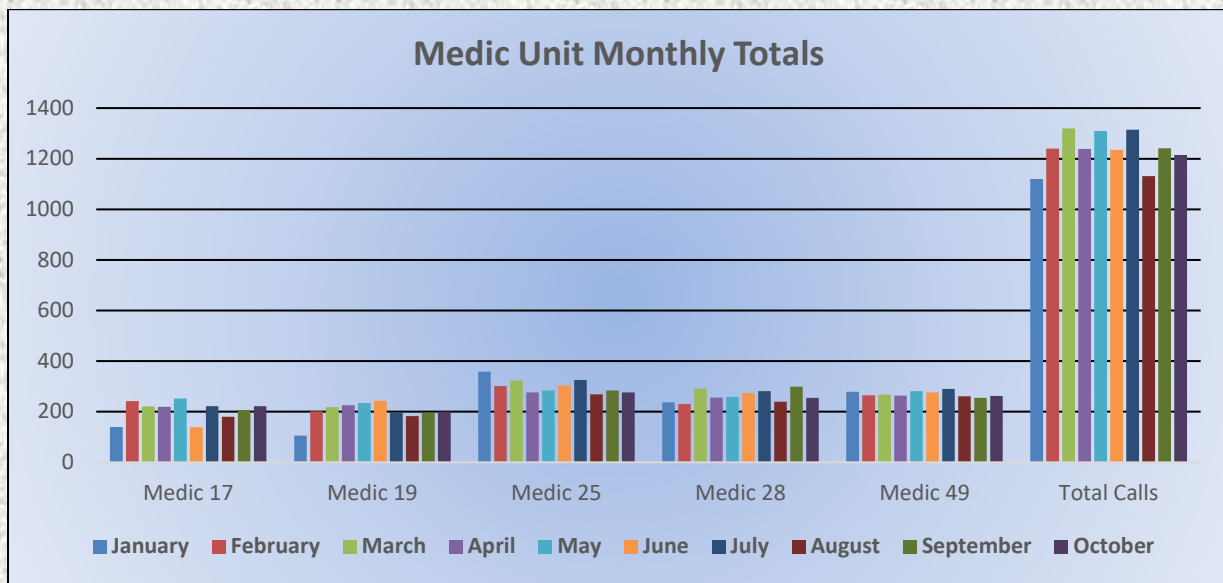




# El Dorado County Fire Protection District

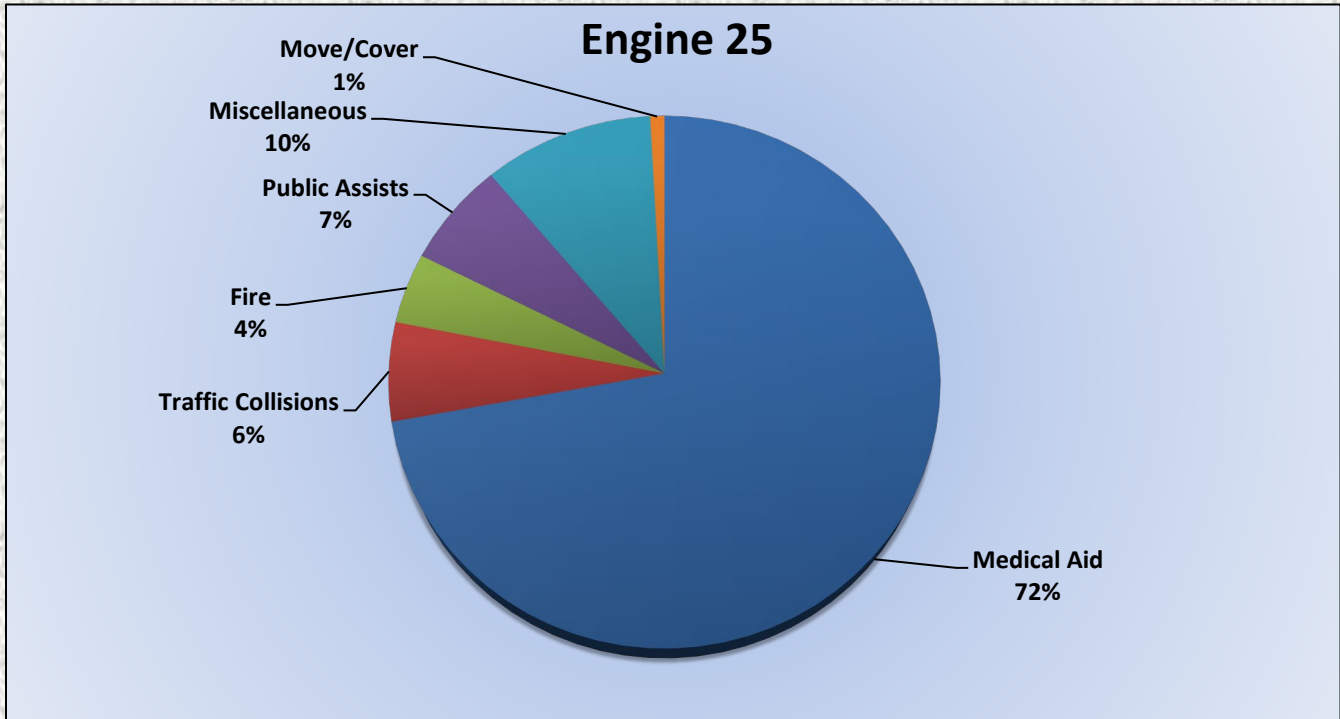


Total Responses for Medic Units: 1,215





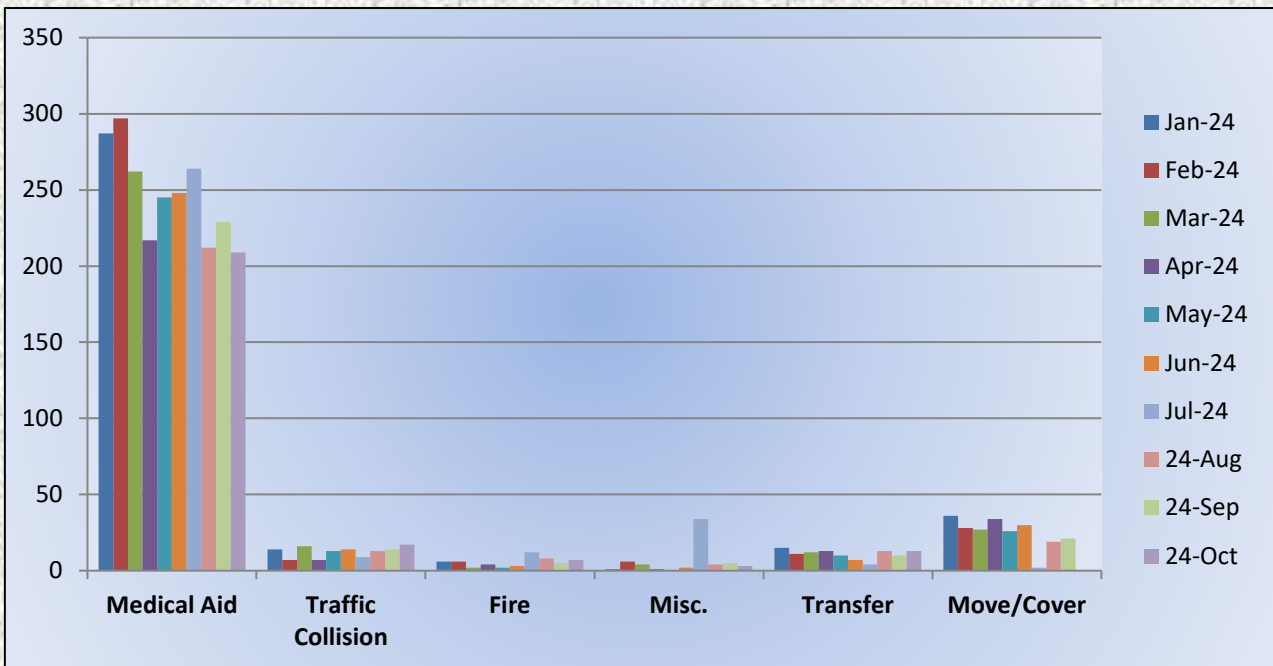
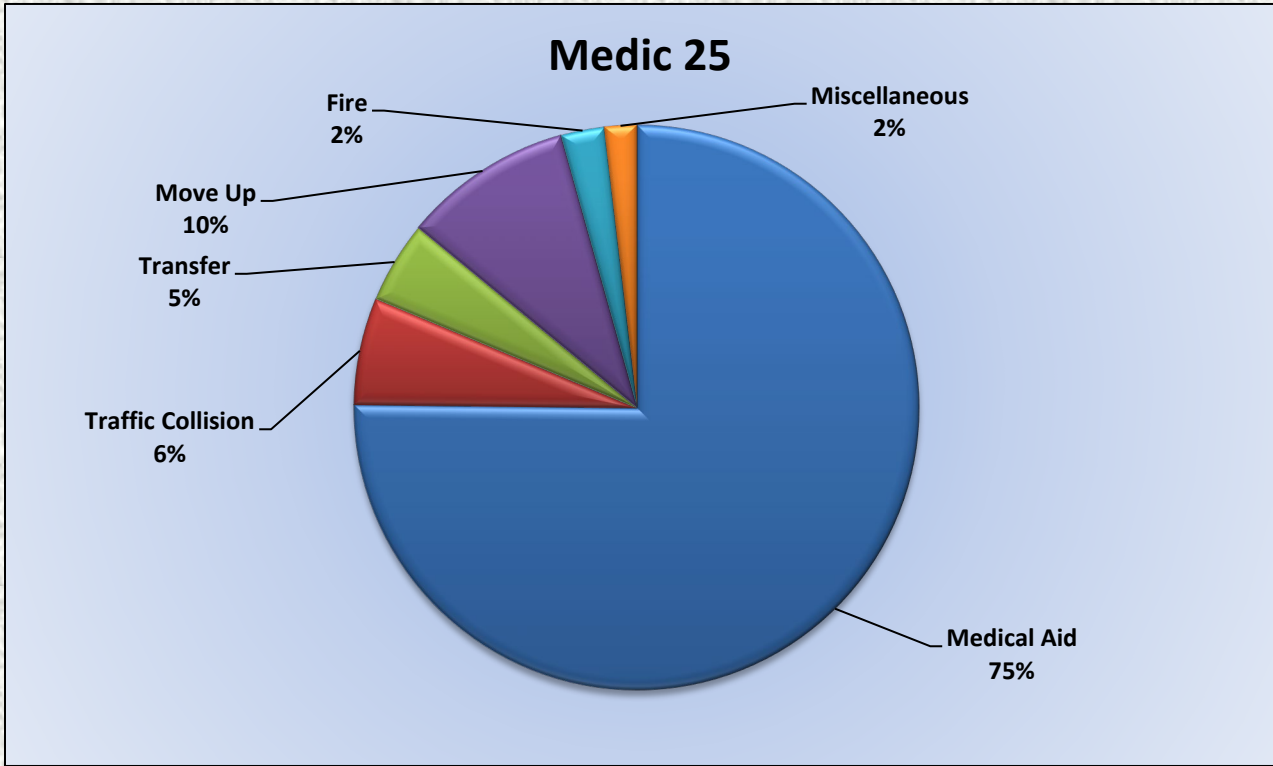
## Engine 25 Call Volume and Locations October 2024







# Medic 25 Monthly Statistics Comparison





## El Dorado County Fire Protection District

---

### Station 17 Run Review October 2024

#### **ENGINE 17:** 85 Total Calls

Medical Aid- 58

Fire- 6

Traffic Collision- 7

Public Assist- 3

Misc- 11

Move/Cover - 0

#### **MEDIC 17:** 222 Total Calls

Medical Aid- 104

Fire- 5

Traffic Collision- 11

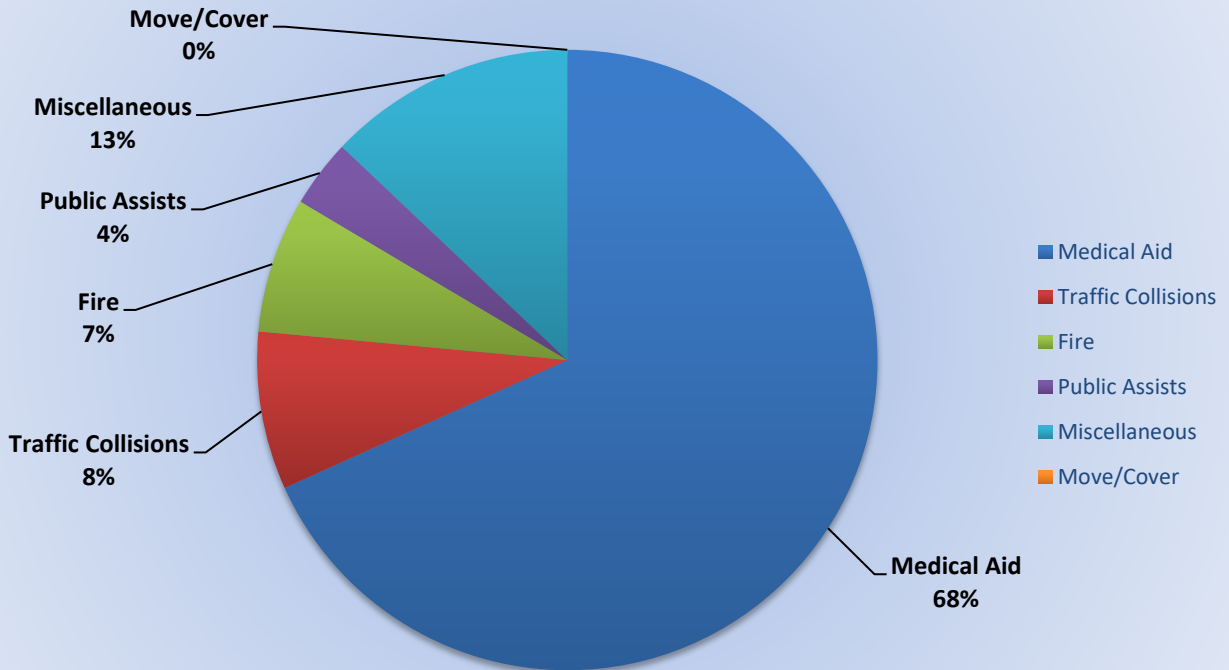
Transfer- 3

Misc- 2

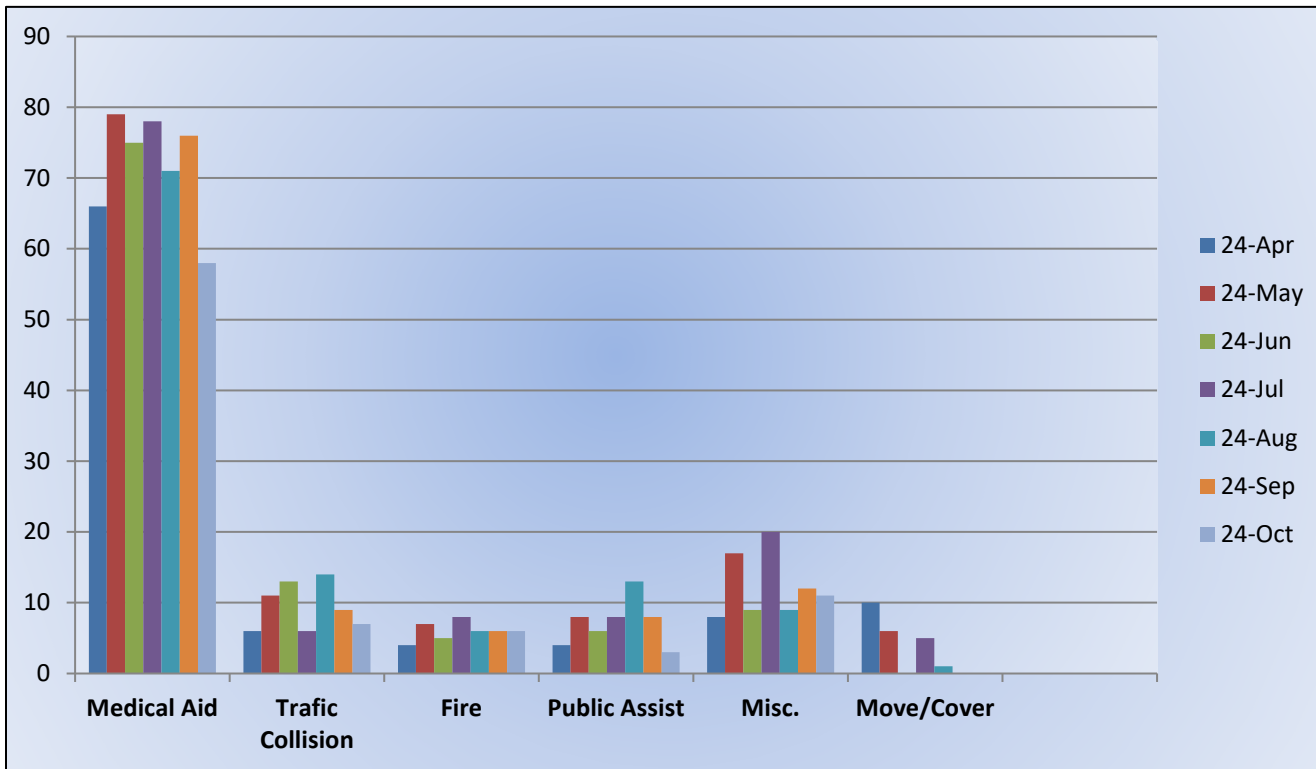
Move/Cover - 97



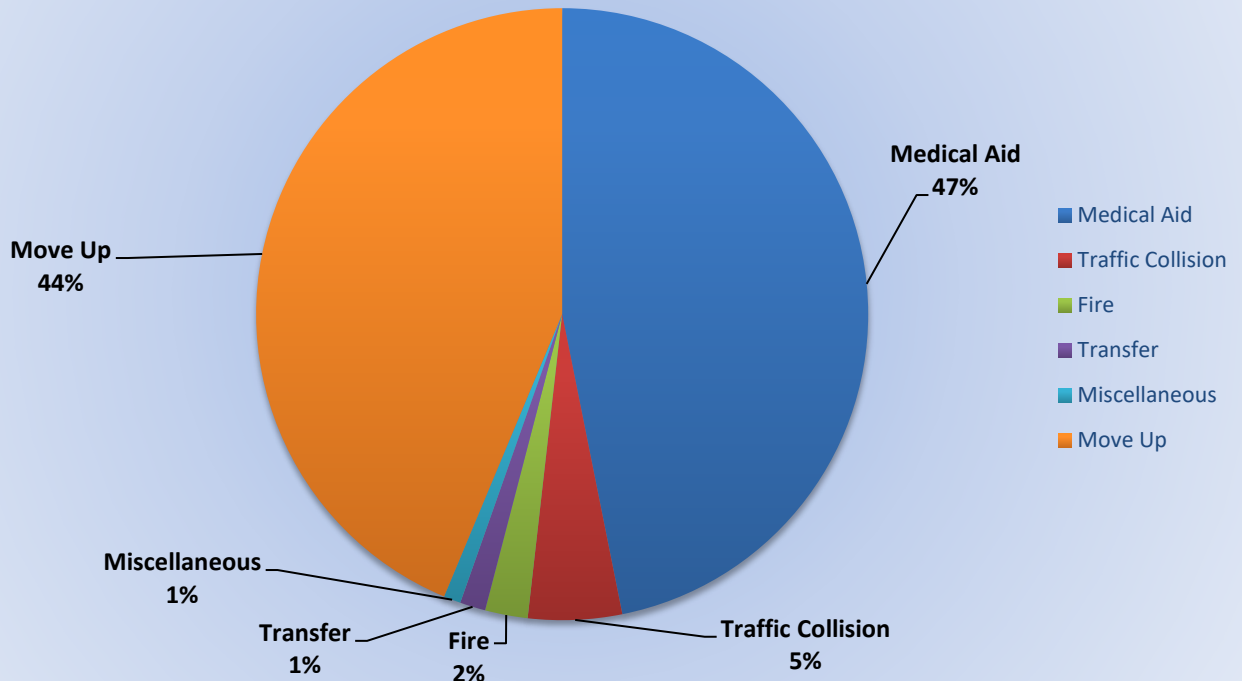
## Response Breakdown



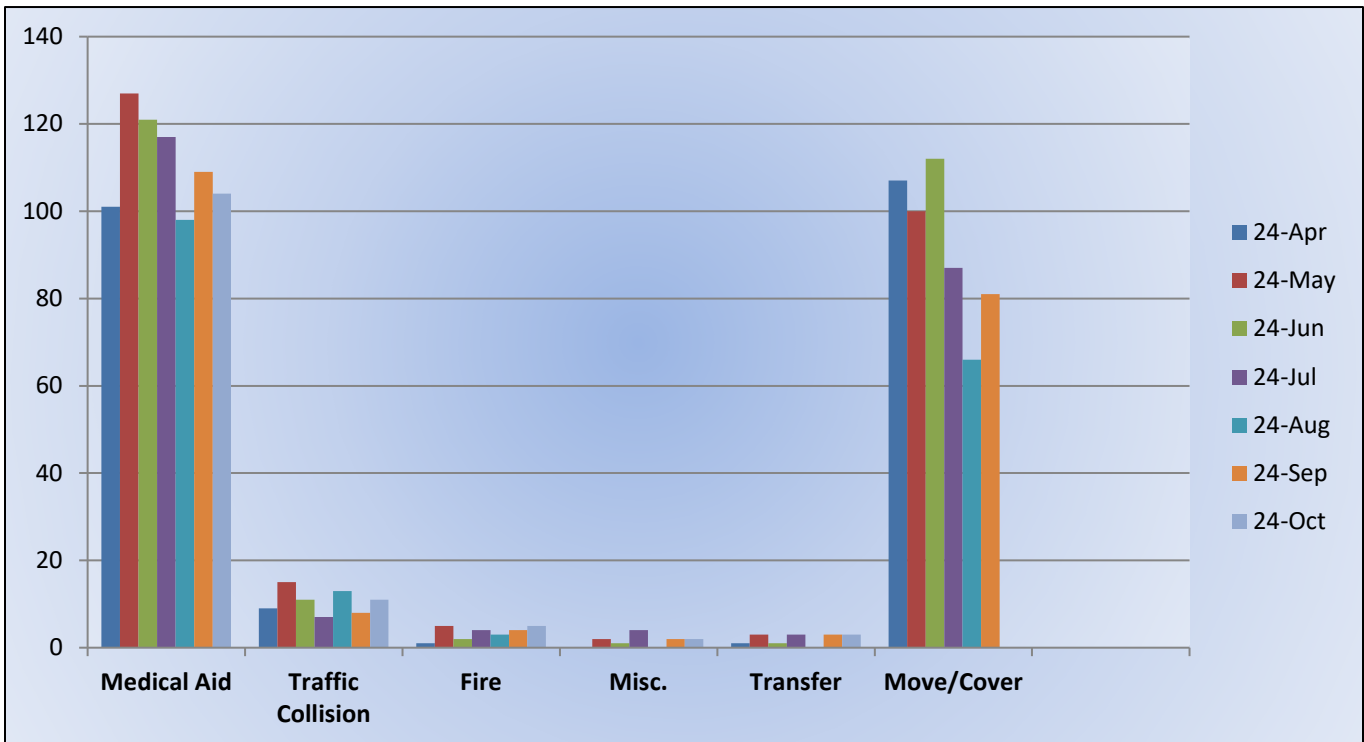
## E17 Monthly Statistics Comparison



## Response Breakdown



## M17 Monthly Statistics Comparison







## El Dorado County Fire Protection District

---

### Station 19 Run Review October 2024

#### **ENGINE 19:** 61 Total Calls

Medical Aid- 34

Fire- 15

Traffic Collision- 7

Public Assist- 2

Misc- 1

Move/Cover - 2

#### **MEDIC 19:** 200 Total Calls

Medical Aid- 84

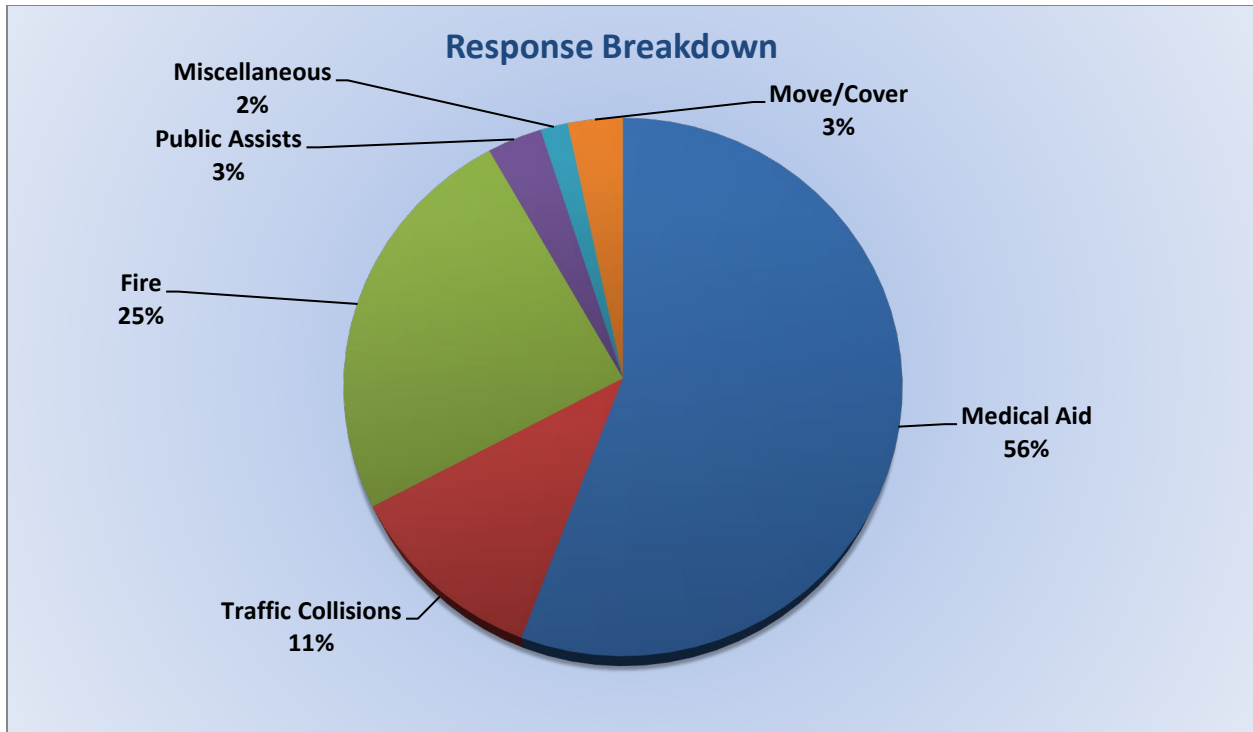
Fire- 3

Traffic Collision- 10

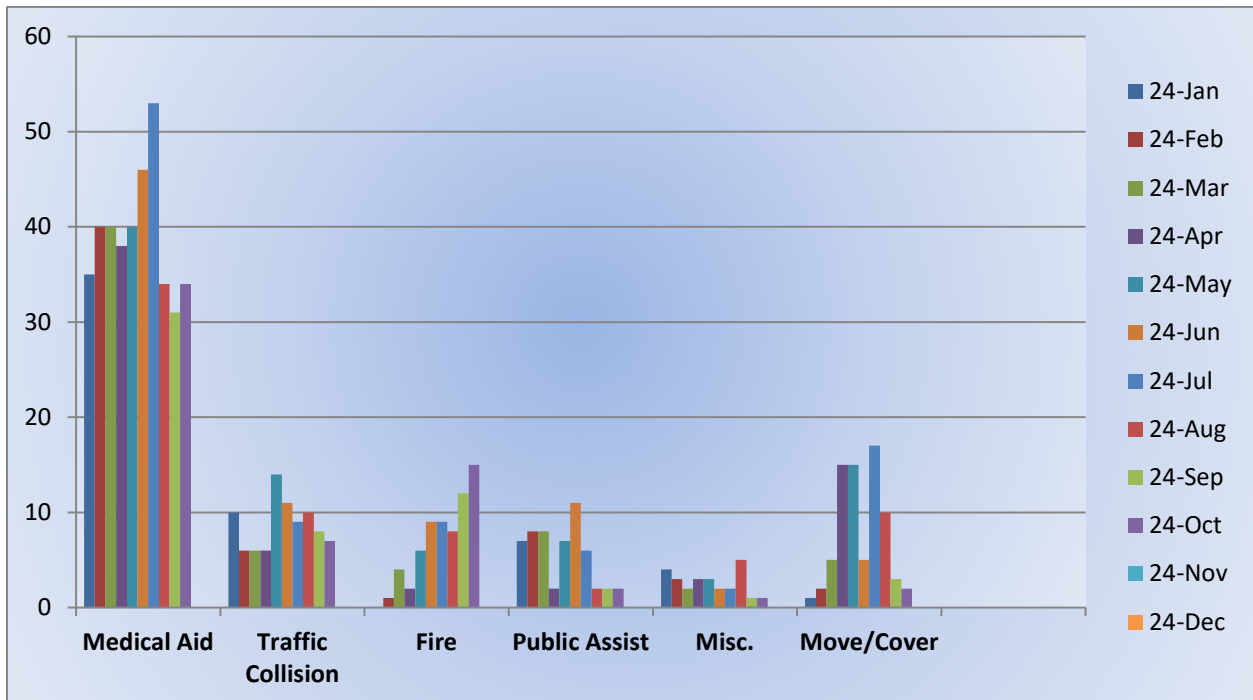
Transfer- 2

Misc- 1

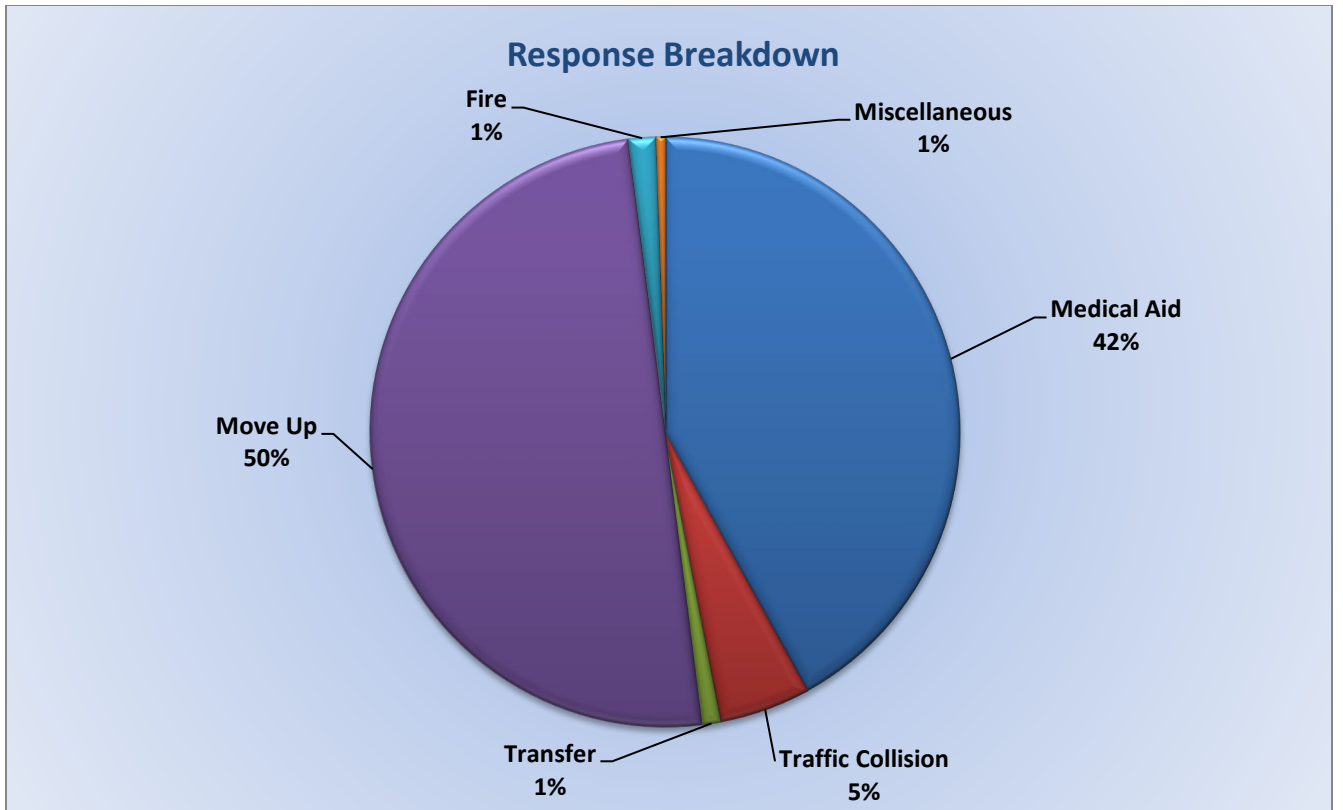
Move/Cover - 100



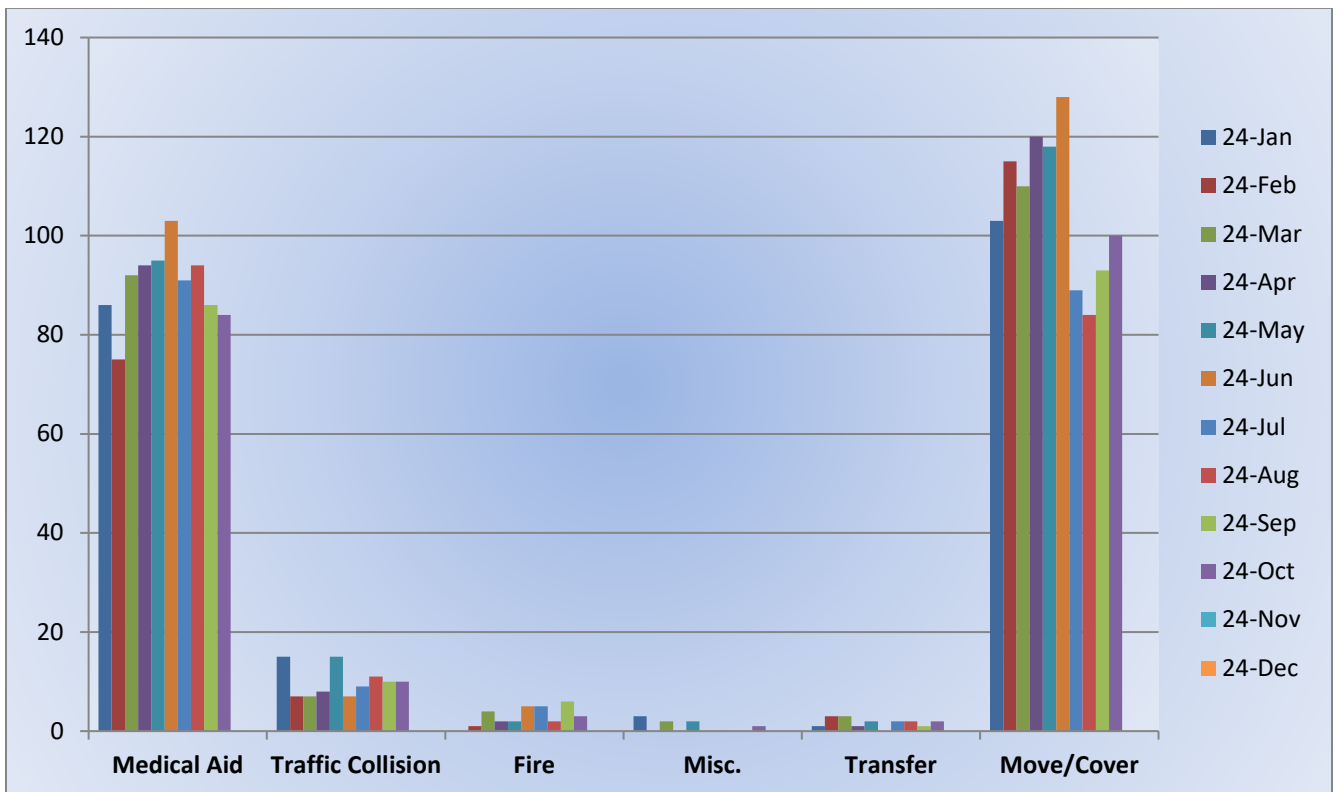
### E19 Monthly Statistics Comparison







### M19 Monthly Statistics Comparison





## El Dorado County Fire Protection District

---

### Station 25 Run Review October 2024

#### **ENGINE 25:** 233 Total Calls

Medical Aid- 168

Fire- 10

Traffic Collision- 14

Public Assist- 15

Misc- 24

Move/Cover - 2

#### **MEDIC 25:** 276 Total Calls

Medical Aid- 209

Fire- 7

Traffic Collision- 17

Transfer- 13

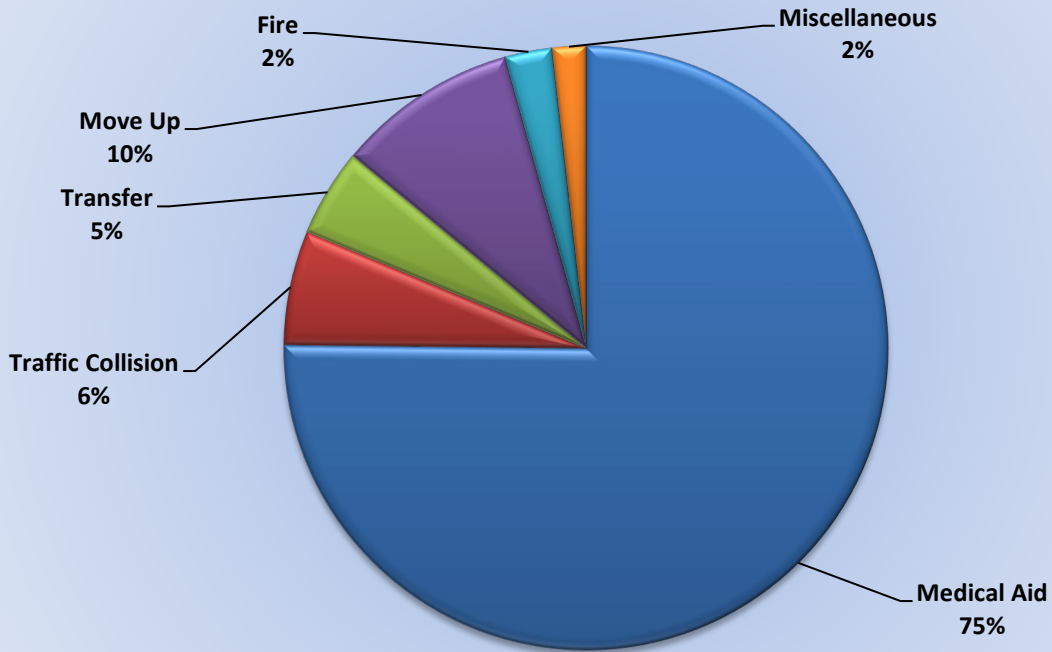
Misc- 3

Move/Cover – 27

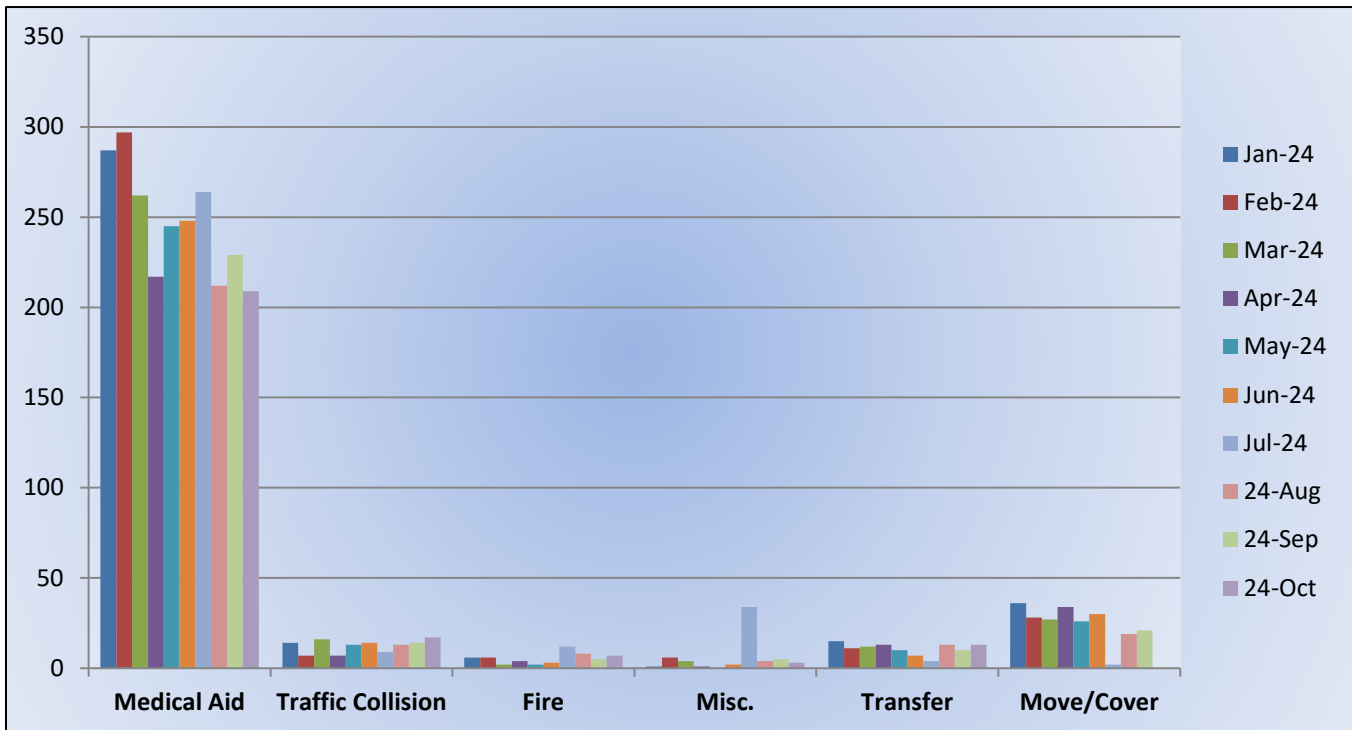




## Response Breakdown



## M25 Monthly Statistics Comparison





## El Dorado County Fire Protection District

---

### Station 28 Run Review October 2024

**ENGINE 28:** 113 Total Calls

Medical Aid - 57

Fire - 9

Traffic Collision - 24

Public Assist - 0

Misc - 15

Move/Cover – 8

**MEDIC 28:** 255 Total Calls

Medical Aid- 181

Fire- 6

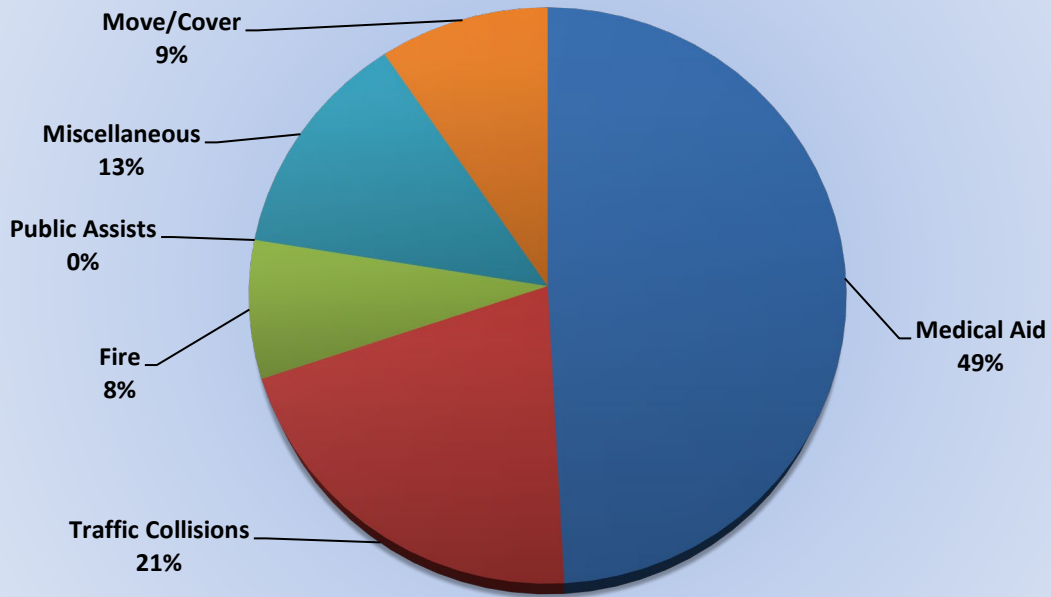
Traffic Collision- 20

Transfer- 0

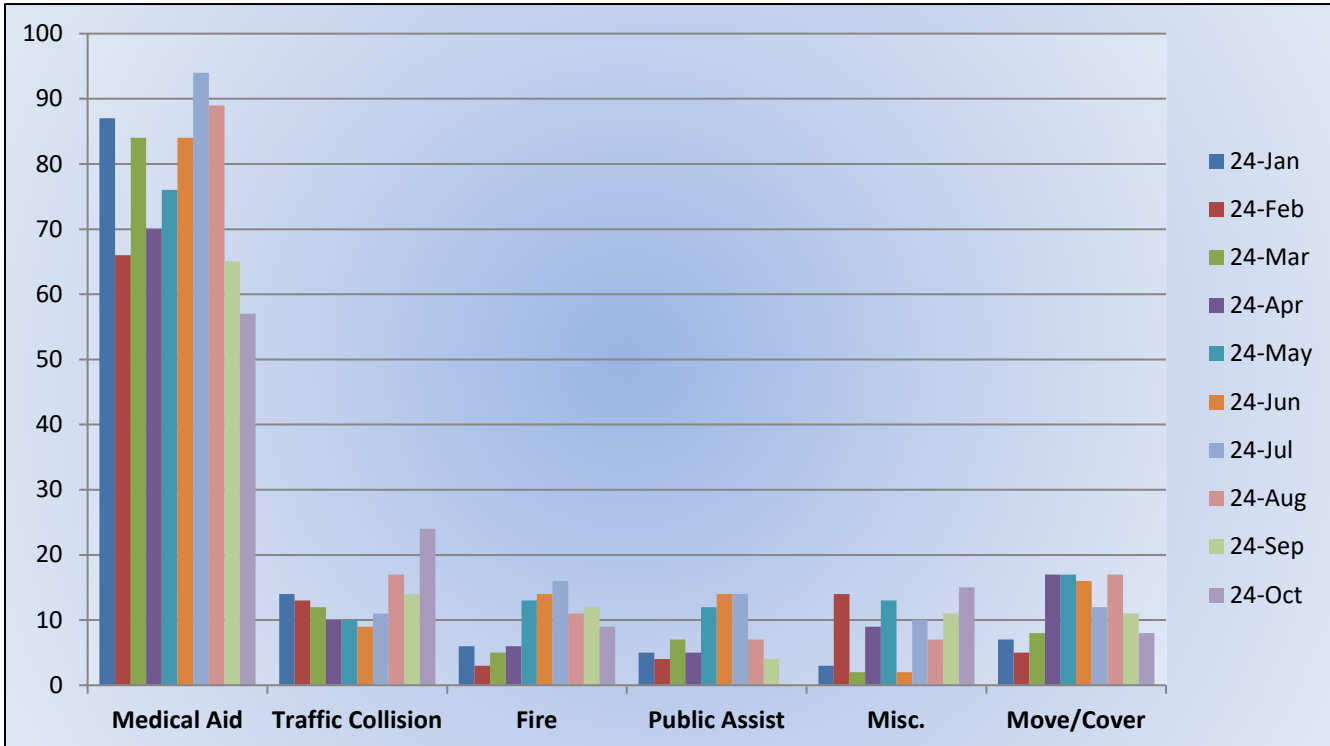
Misc- 3

Move/Cover – 45

## Response Breakdown

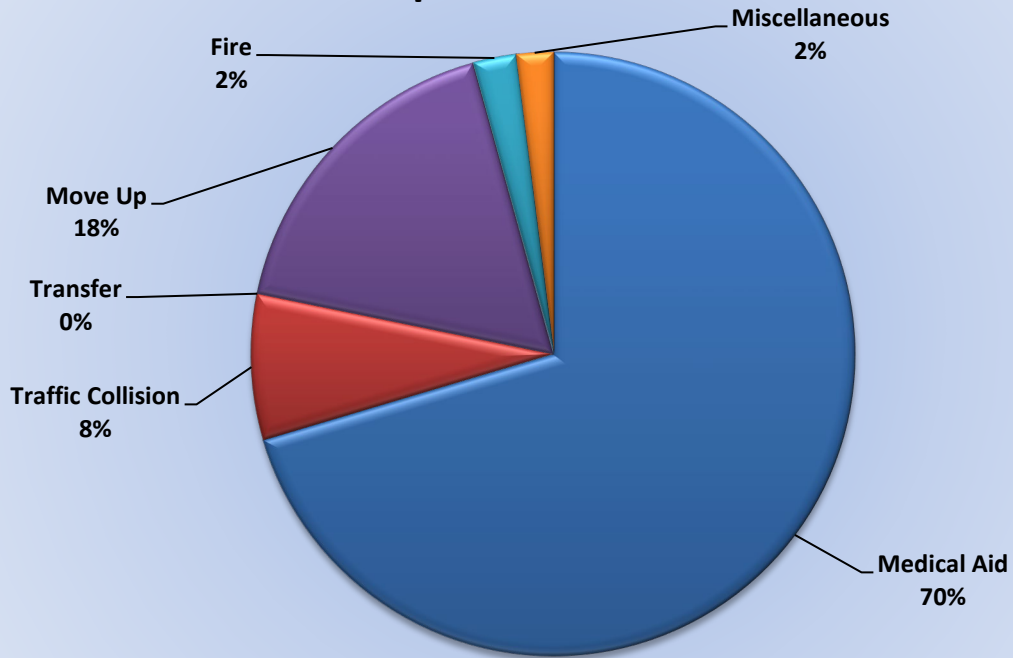


## E28 Monthly Statistics Comparison

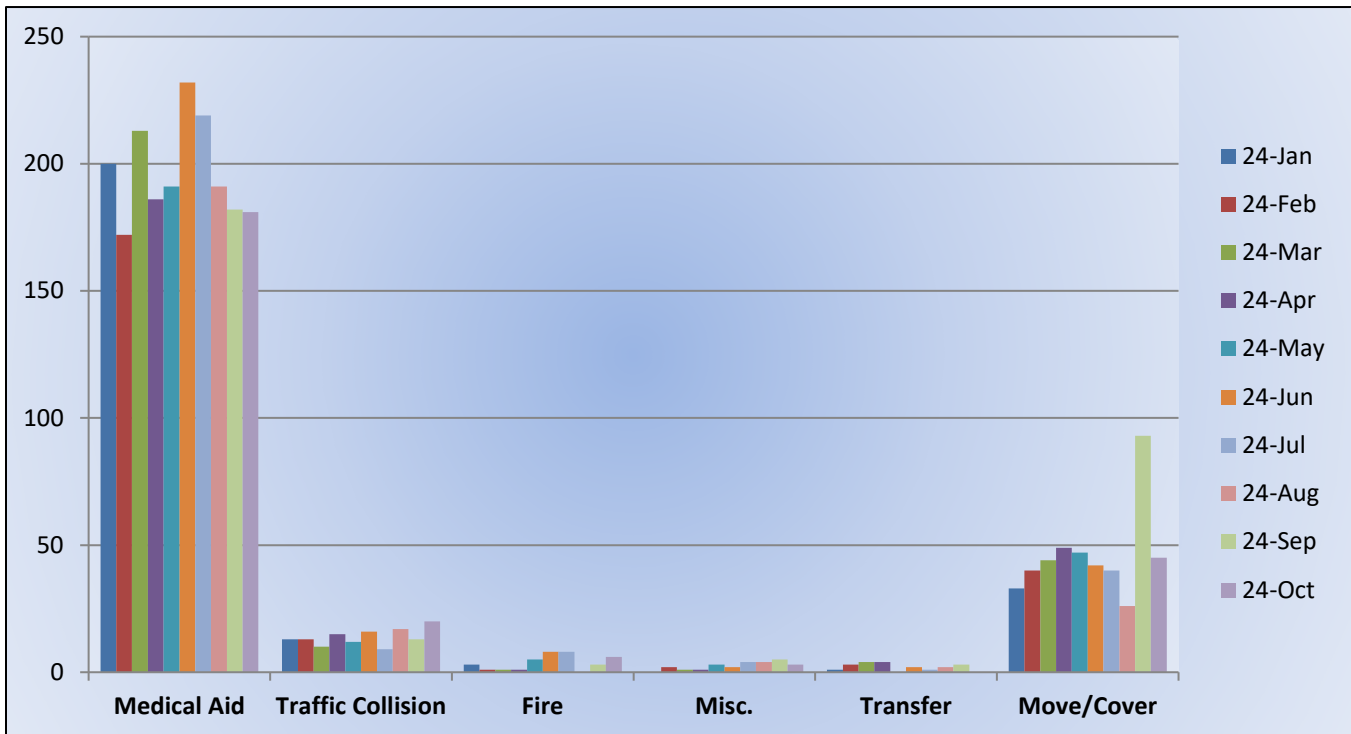




## Response Breakdown



## M28 Monthly Statistics Comparison





El Dorado County Fire Protection District

---

## Station 72 and Medic 49 Run Review October 2024

**ENGINE 72:** Total Calls 32

Medical Aid – 23

Fire – 1

Traffic Collision – 3

Public Assist – 2

Misc – 3

Move/Cover – 0

**MEDIC 49:** Total Calls 262

Medical Aid – 191

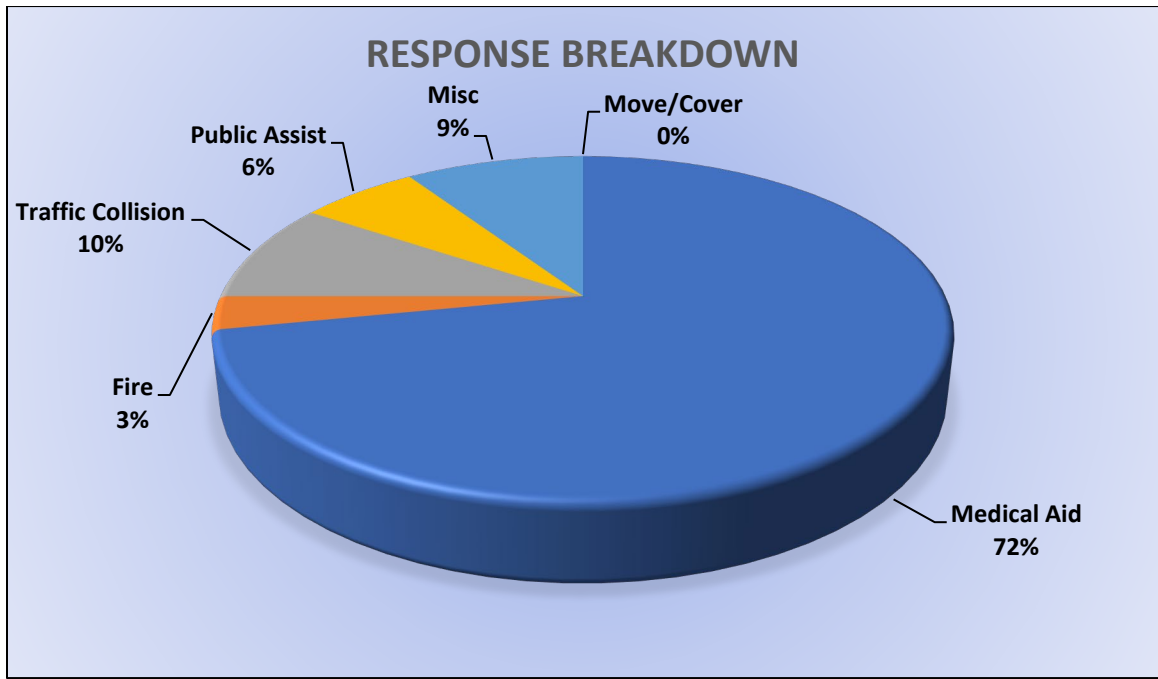
Fire – 8

Traffic Collision – 16

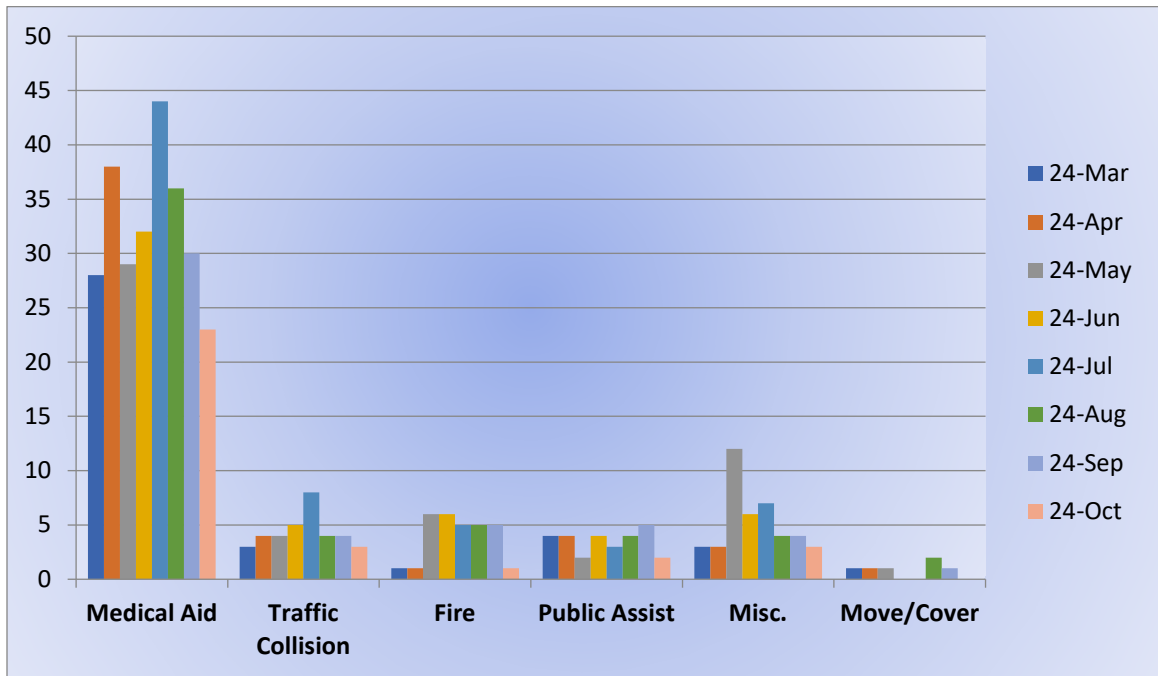
Transfer – 5

Misc – 3

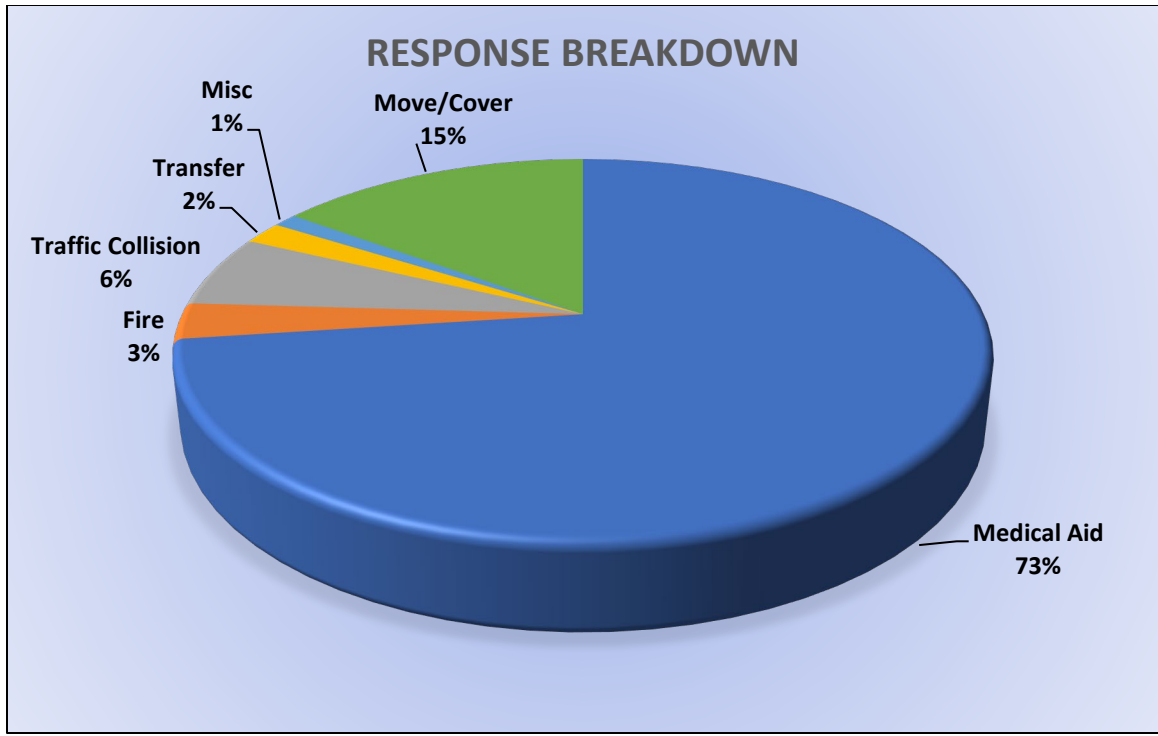
Move/Cover – 39



### E72 Monthly Statistics Comparison







### M49 Monthly Statistics Comparison

