



El Dorado County Fire Protection District

June 2024

Run Statistics – Engines & Medics



Engine Companies:

Engine 17: 108

Engine 19: 84

Engine 25: 292

Engine 28: 139

Engine 72: 53

Total Responses: 676

Medic Units:

Medic 17: 138

Medic 19: 243

Medic 25: 304

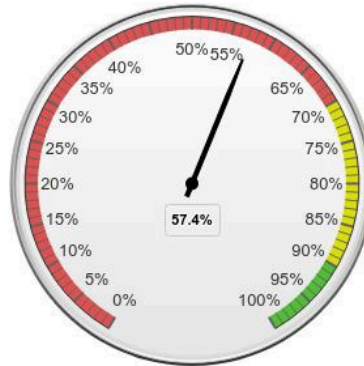
Medic 28: 274

Medic 49: 276

Total Responses: 1,235

Percentage of Unit Total Response Times Under 09:00 Minutes

Jun 01, 2024 to Jun 30, 2024



Unit Average Total Response Time (HH:MM:SS)

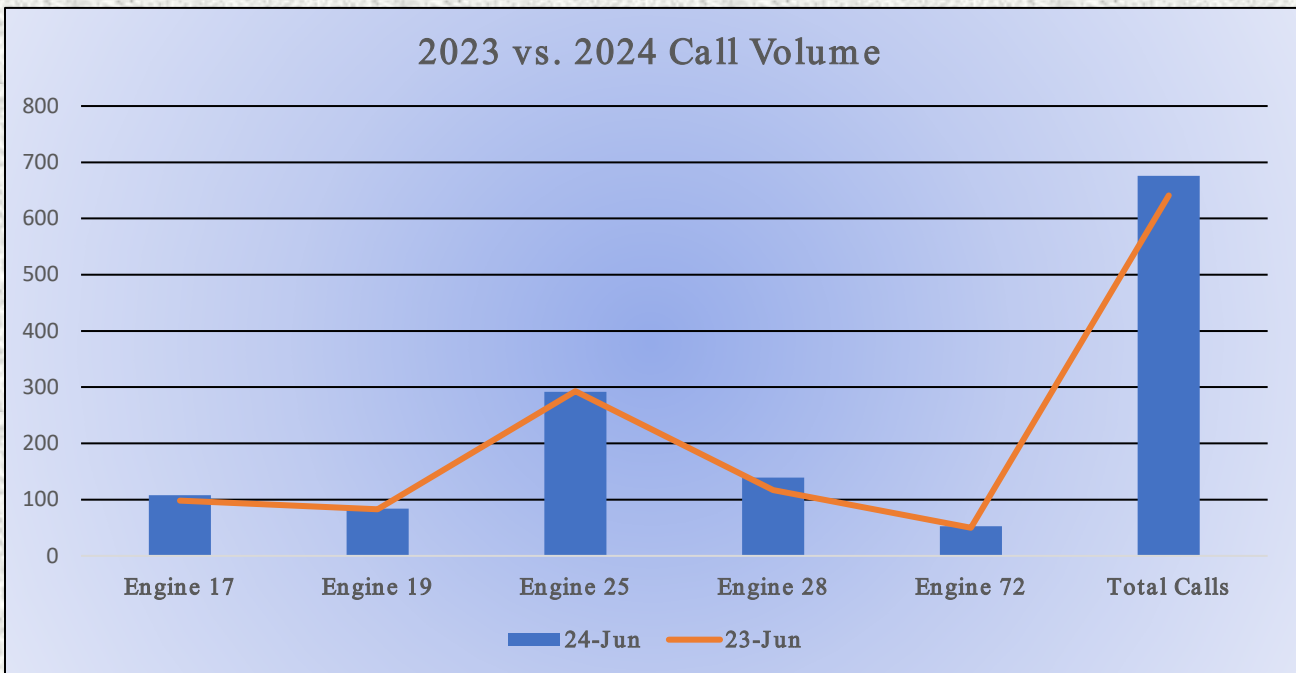
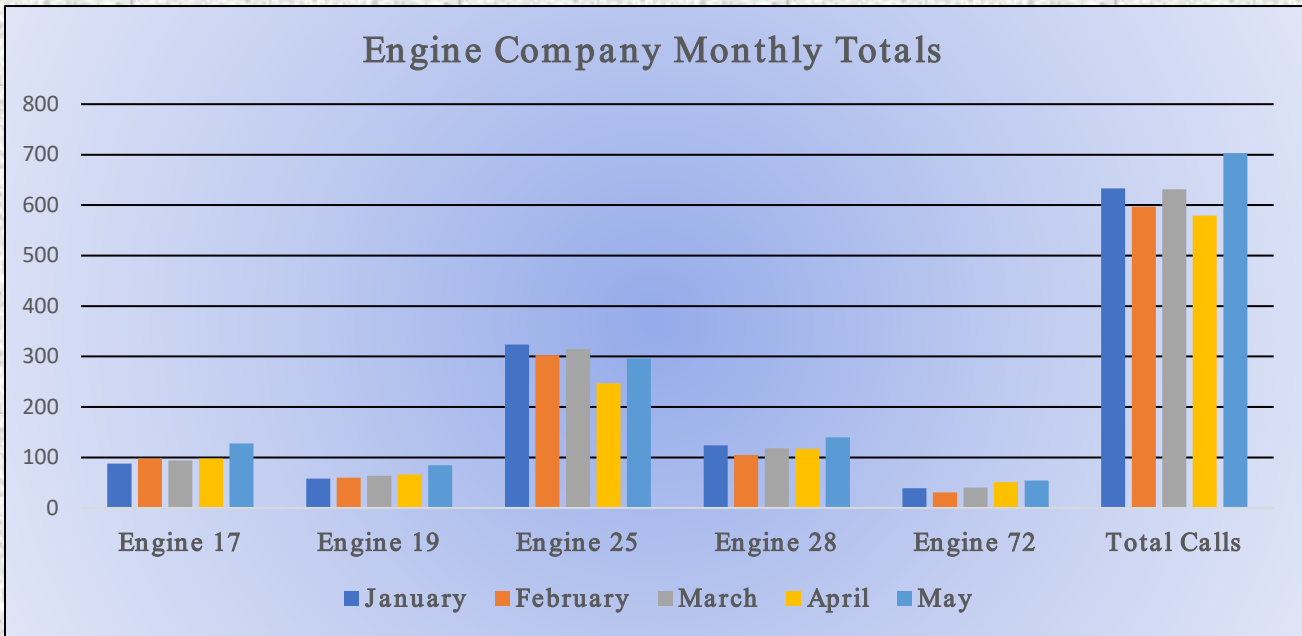
Jun 01, 2024 to Jun 30, 2024





El Dorado County Fire Protection District

Monthly Run Statistics and Yearly Comparison
June 2024
Engine Companies and Medic Units

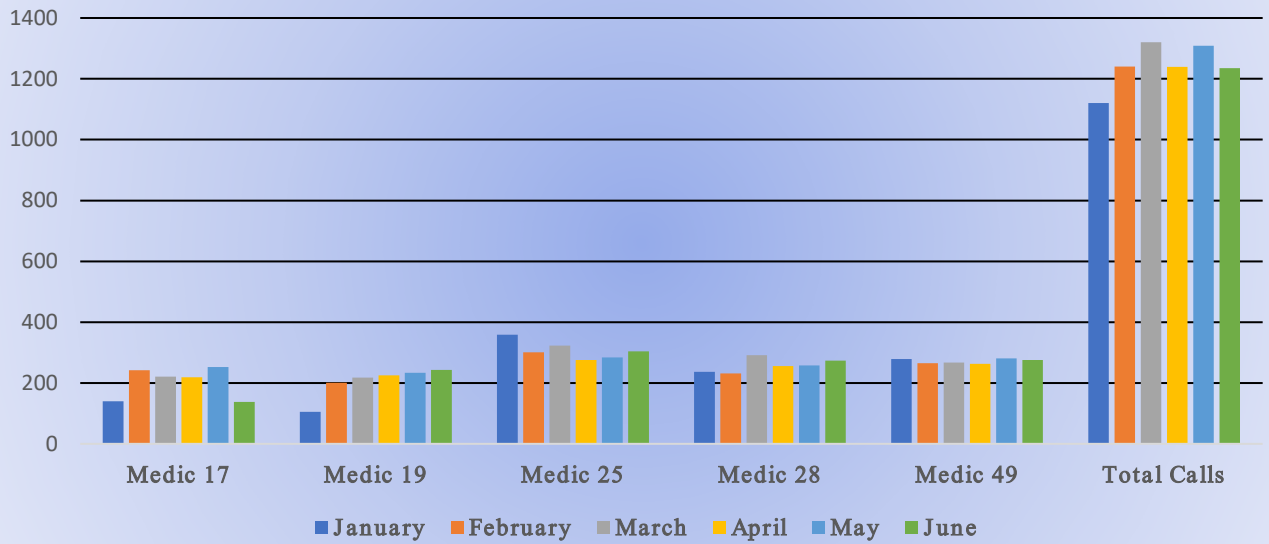




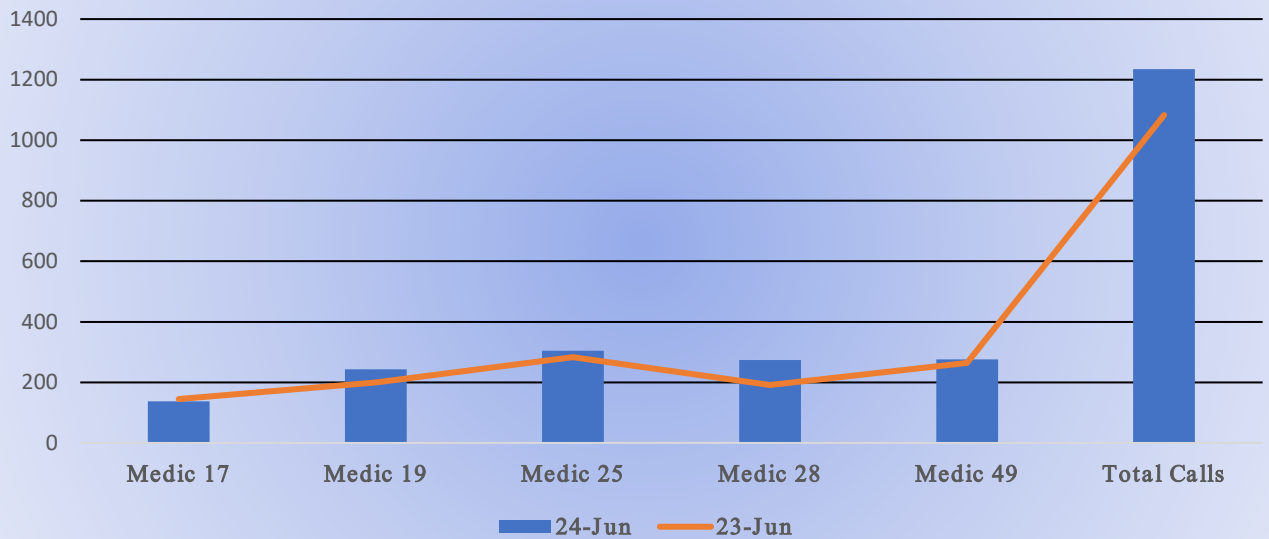
El Dorado County Fire Protection District

Monthly Run Statistics and Yearly Comparison May 2024 Engine Companies and Medic Units

Medic Unit Monthly Totals



2023 vs. 2024 Call Volume





El Dorado County Fire Protection District



Station 25 Run Statistics June 2024

ENGINE 25: 292 Total Calls

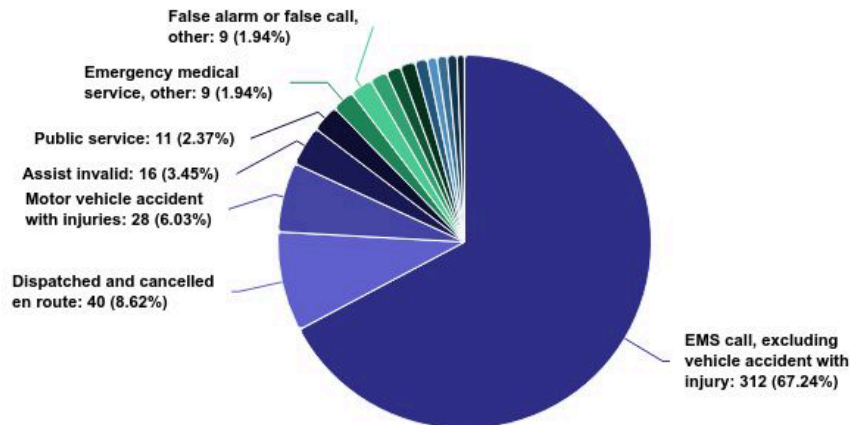
- Medical Aid- 214
- Fire- 13
- Traffic Collision- 23
- Public Assist - 15
- Misc. – 25
- Move/Cover– 2

MEDIC 25: 304 Total Calls

- Medical Aid- 248
- Fire- 3
- Traffic Collision- 14
- Transfer -7
- Misc.- 2
- Move/Cover - 30

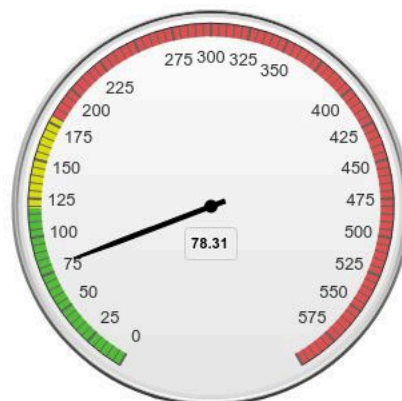
Incident Types (Top 15)

Jun 01, 2024 to Jun 30, 2024



Unit Average Turnout Time (Seconds)

Jun 01, 2024 to Jun 30, 2024



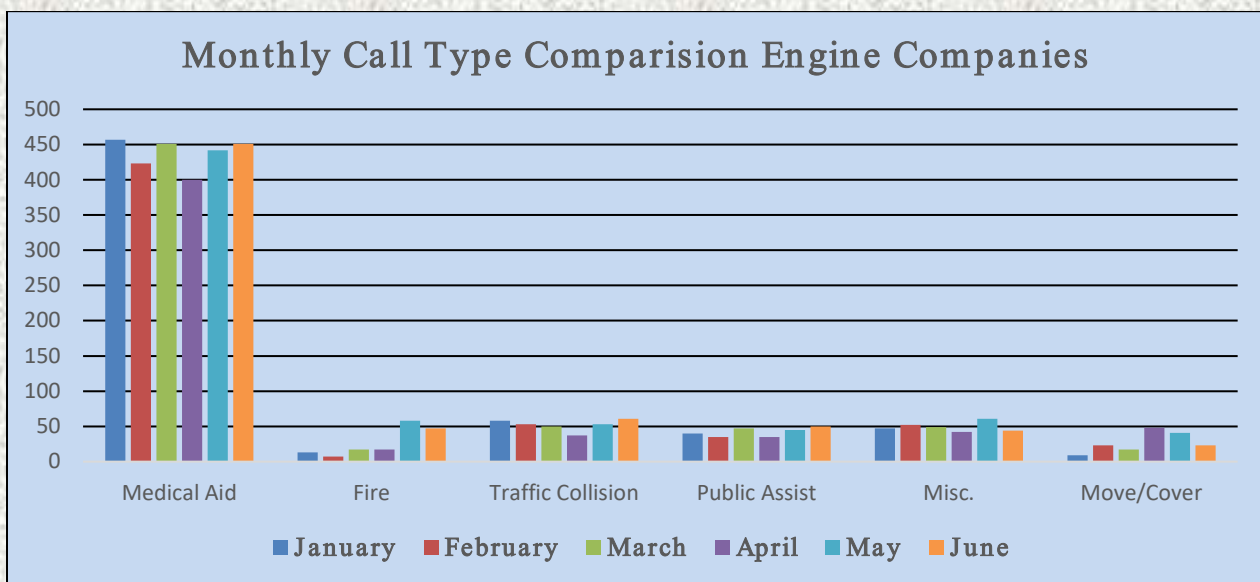
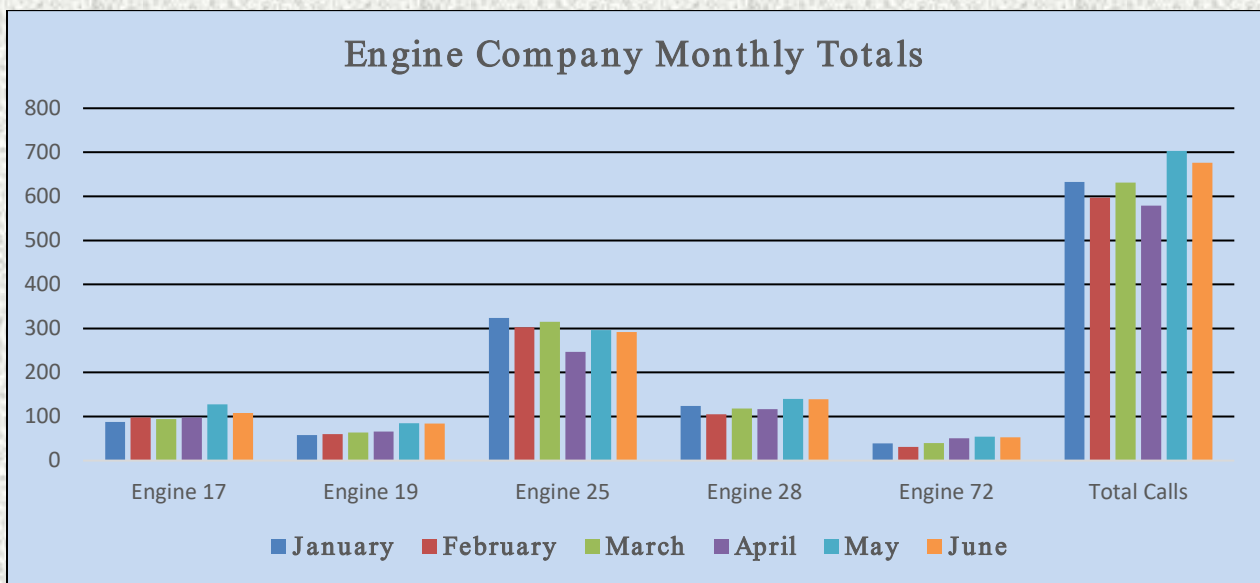


El Dorado County Fire Protection District



Monthly Run Statistics and Call Break Down June 2024 Engine Companies and Medic Units

Total Responses for Engine Companies: 676

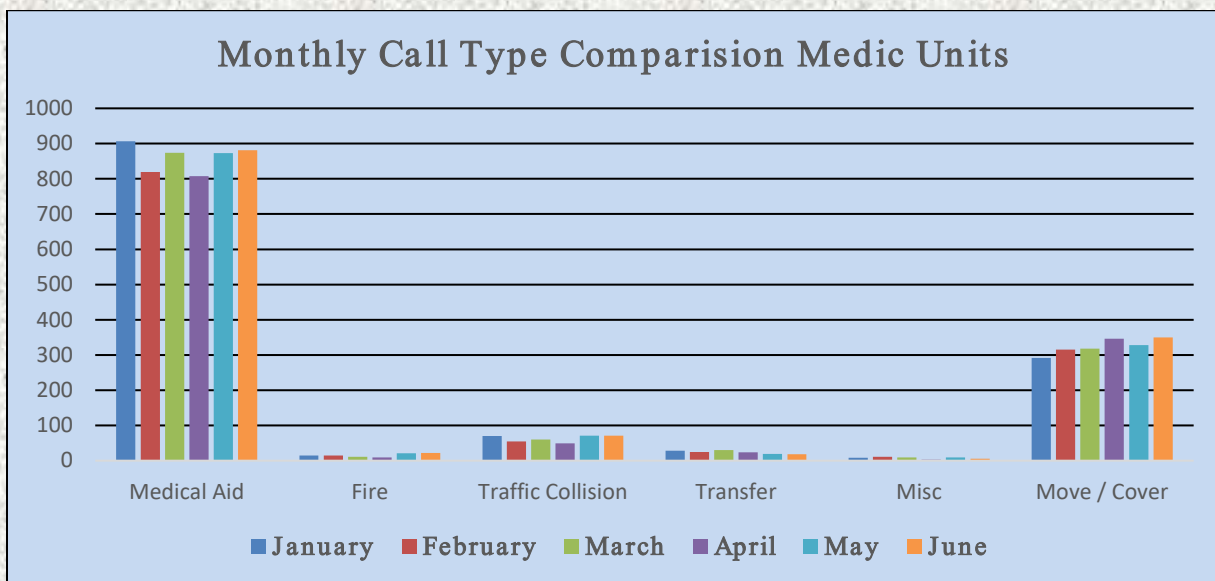
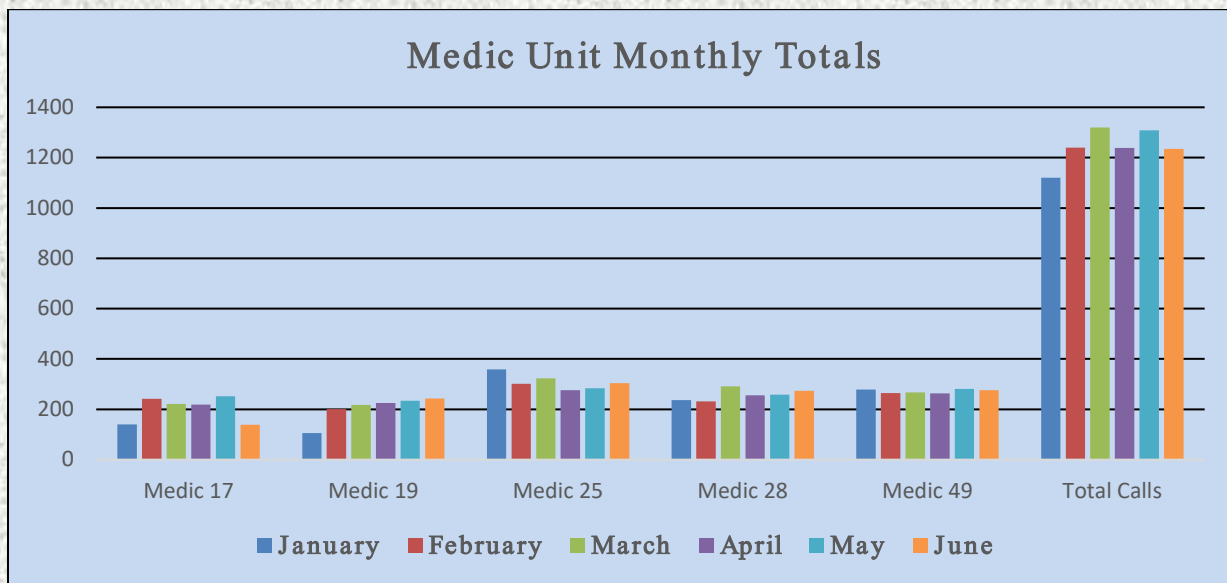




El Dorado County Fire Protection District

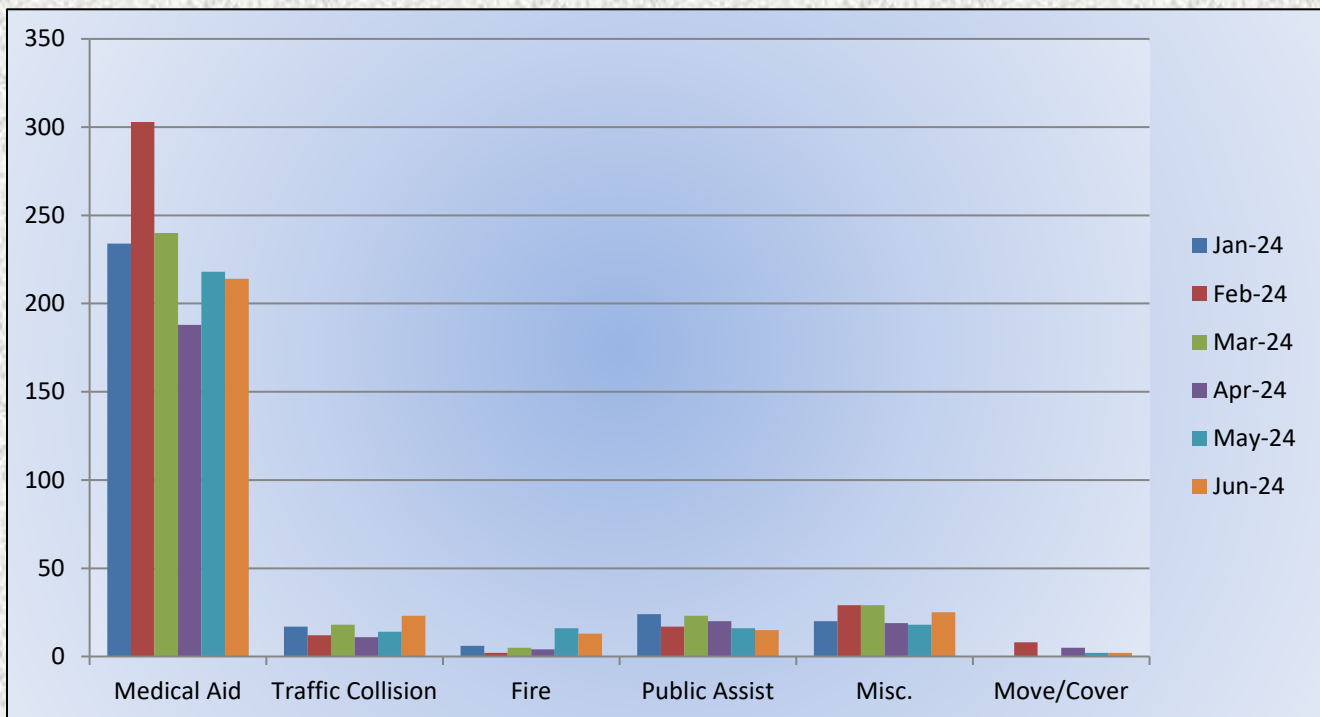


Total Responses for Medic Units: 1,235



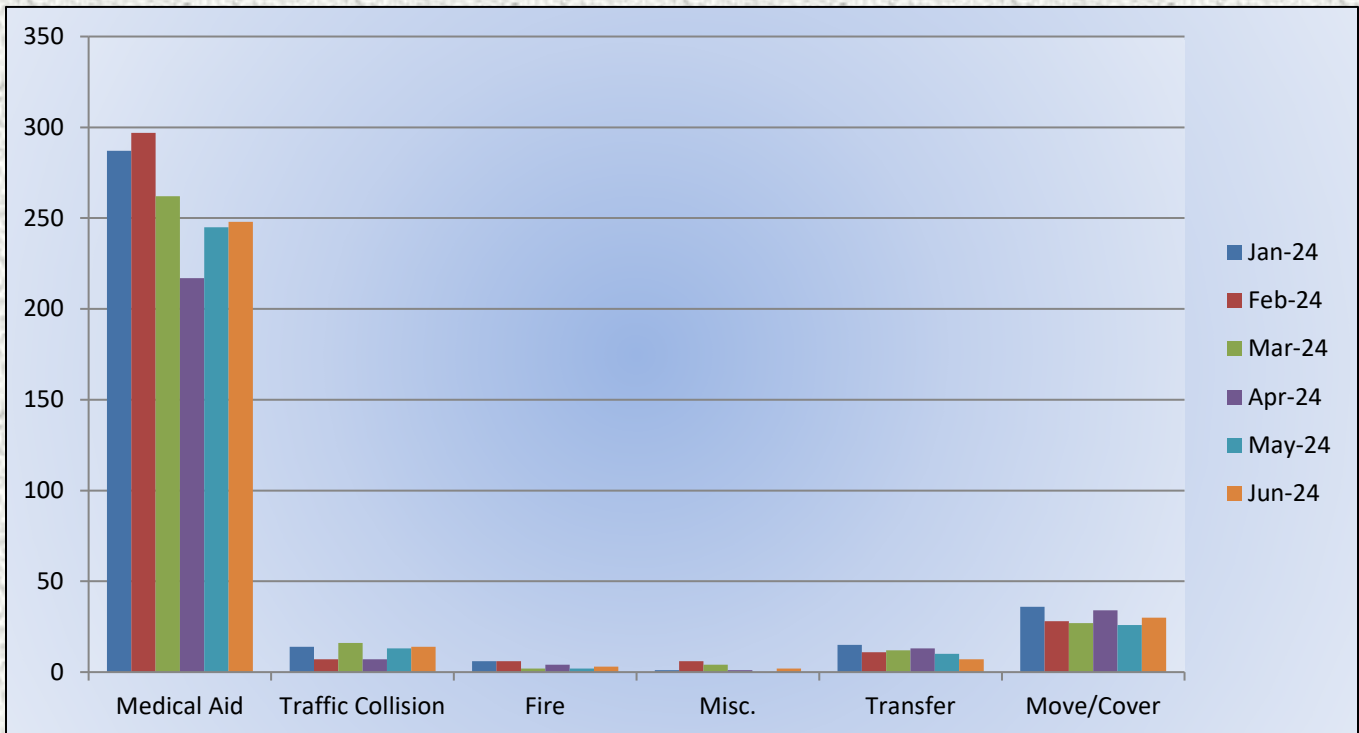


Engine 25 Monthly Statistics Comparison





Medic 25 Monthly Statistics Comparison





El Dorado County Fire Protection District

Station 17 Run Review June 2024

ENGINE 17: 108 Total Calls

Medical Aid- 75

Fire- 5

Traffic Collision- 13

Public Assist- 6

Misc- 9

Move/Cover - 0

MEDIC 17: 138 Total Calls

Medical Aid- 121

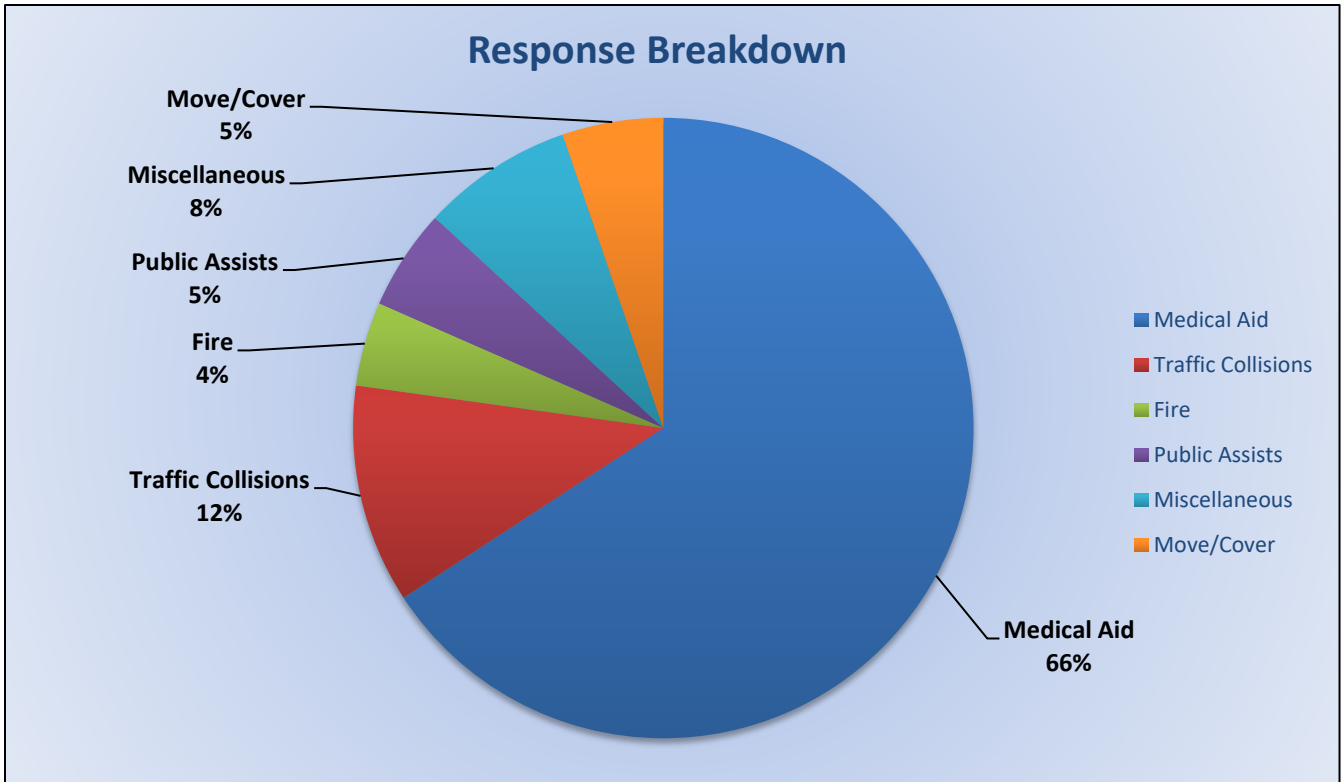
Fire- 2

Traffic Collision- 11

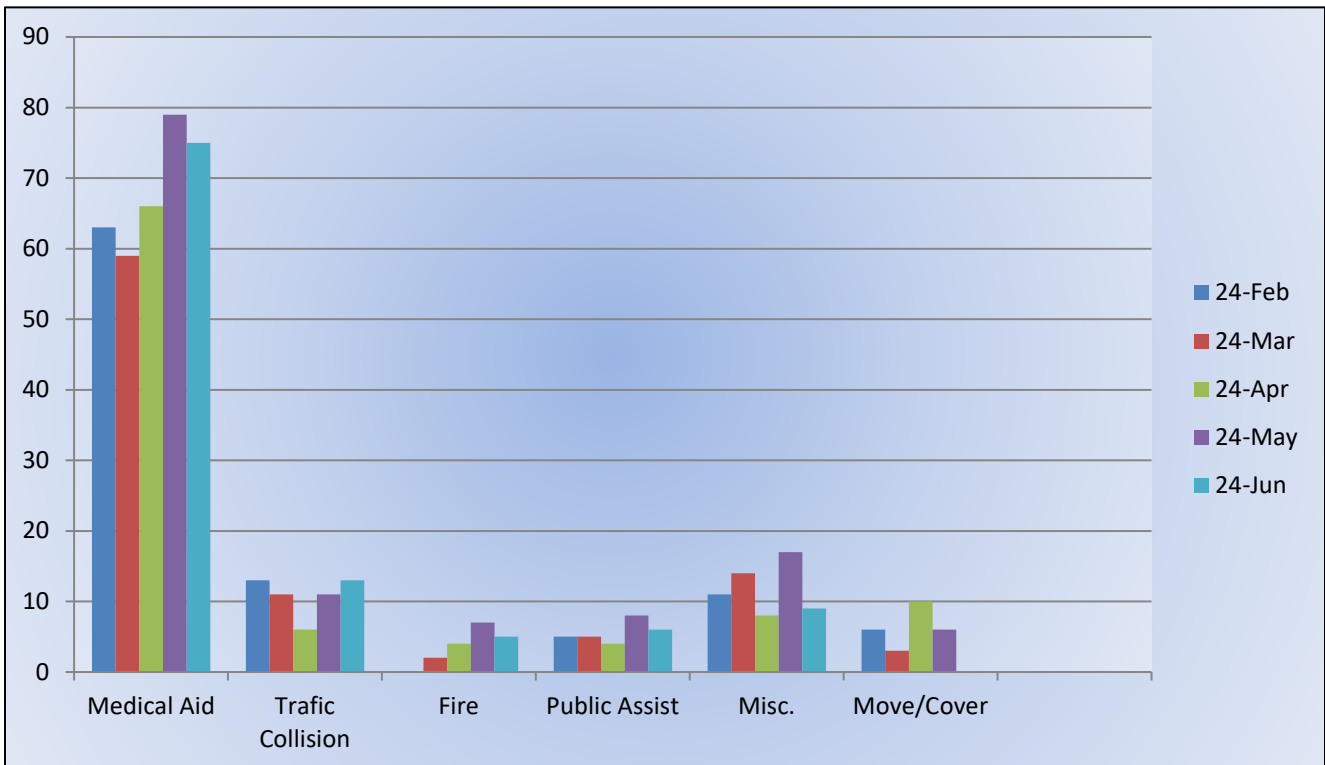
Transfer- 1

Misc- 1

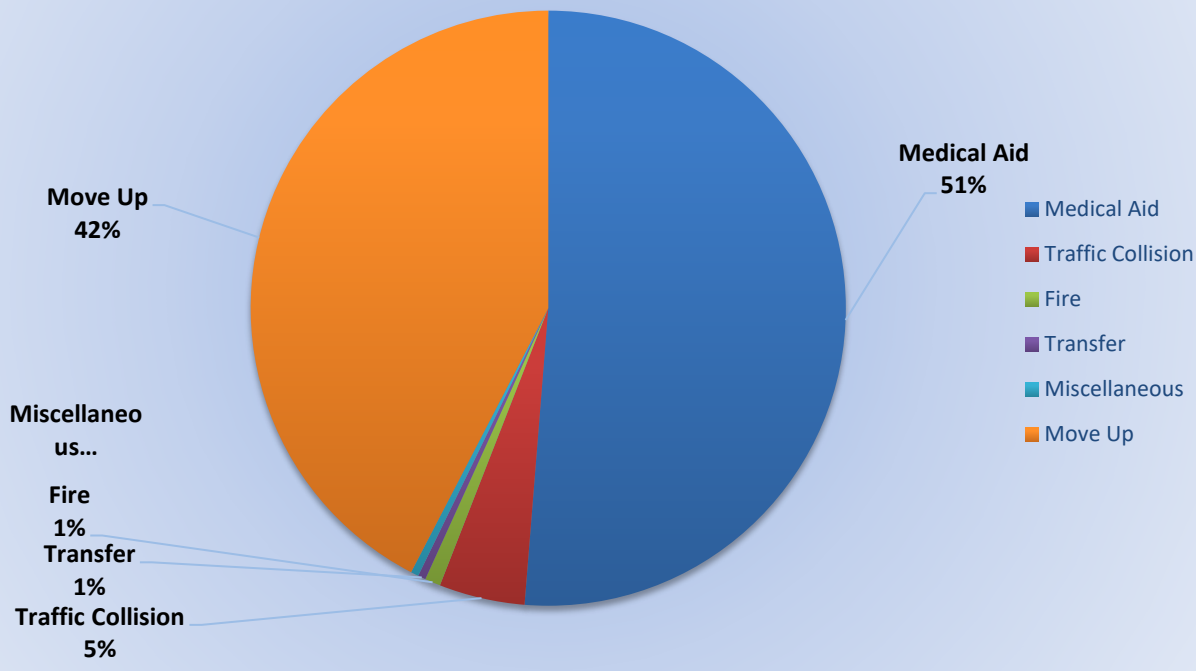
Move/Cover - 112



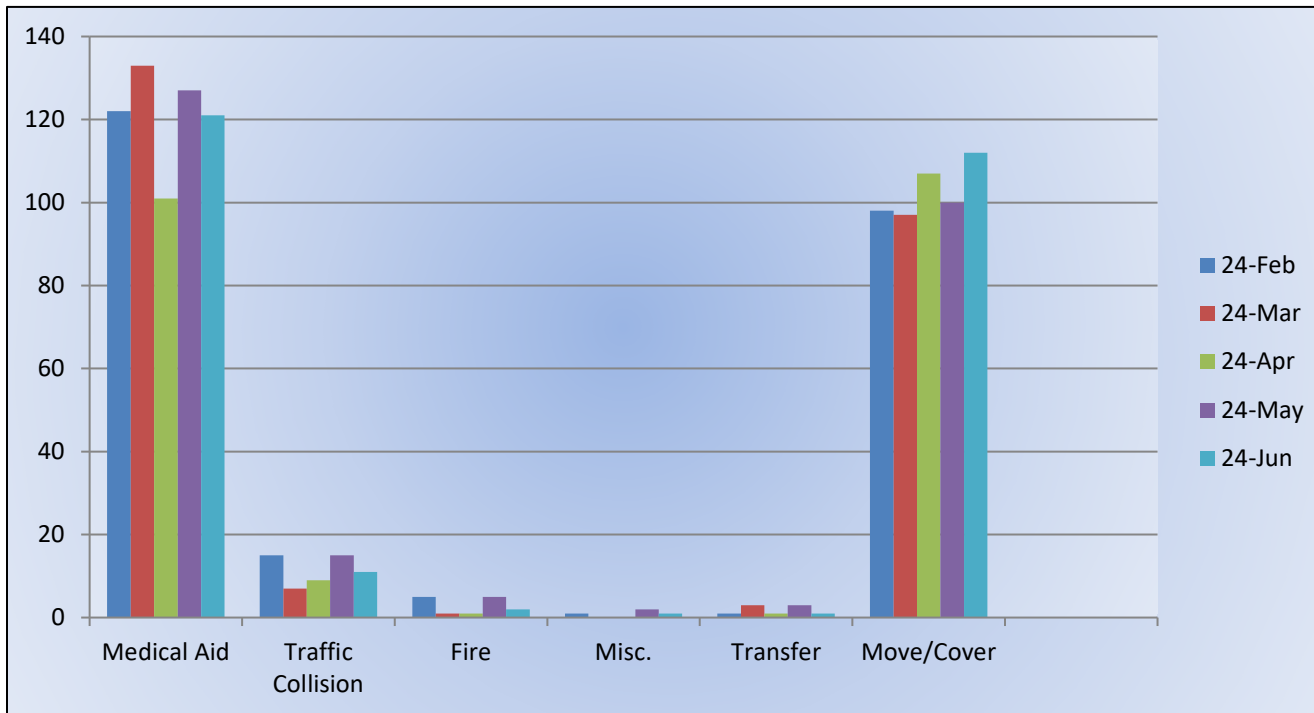
E17 Monthly Statistics Comparison



Response Breakdown



M17 Monthly Statistics Comparison





El Dorado County Fire Protection District

Station 19 Run Review June 2024

ENGINE 19: 84 Total Calls

Medical Aid- 46

Fire- 9

Traffic Collision- 11

Public Assist- 11

Misc- 2

Move/Cover - 5

MEDIC 19: 243 Total Calls

Medical Aid- 103

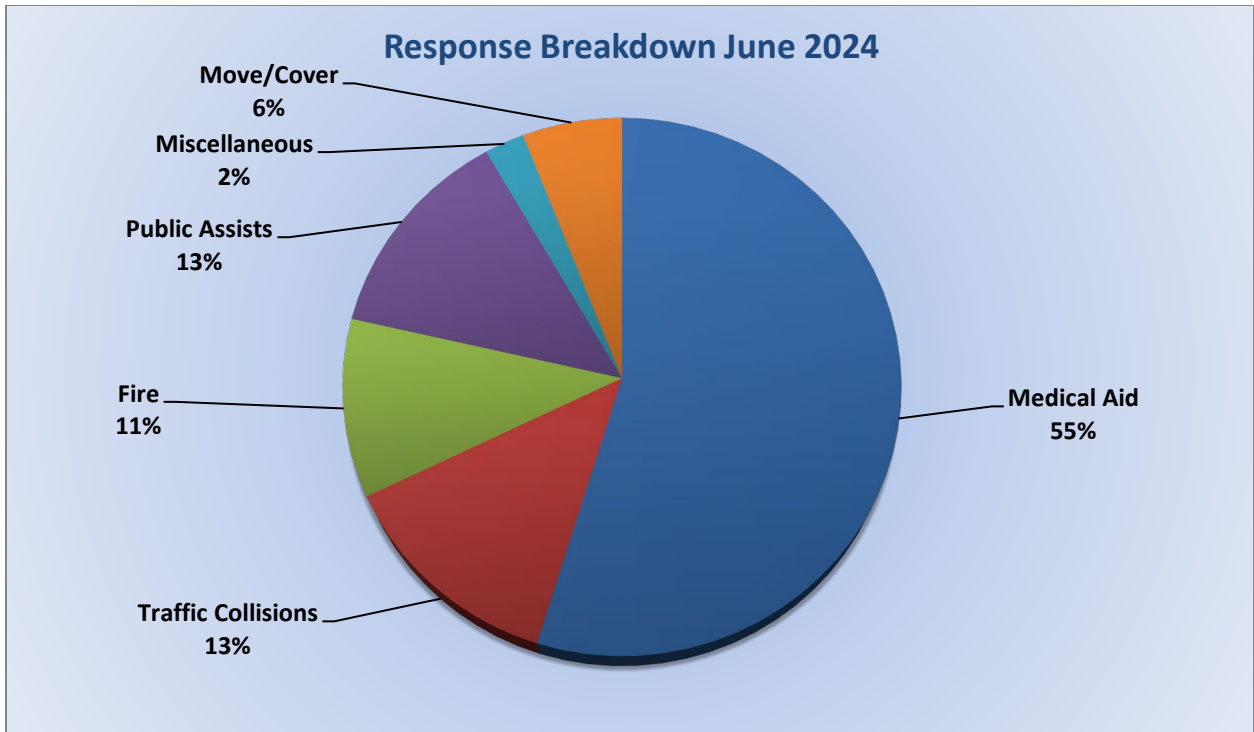
Fire- 5

Traffic Collision- 7

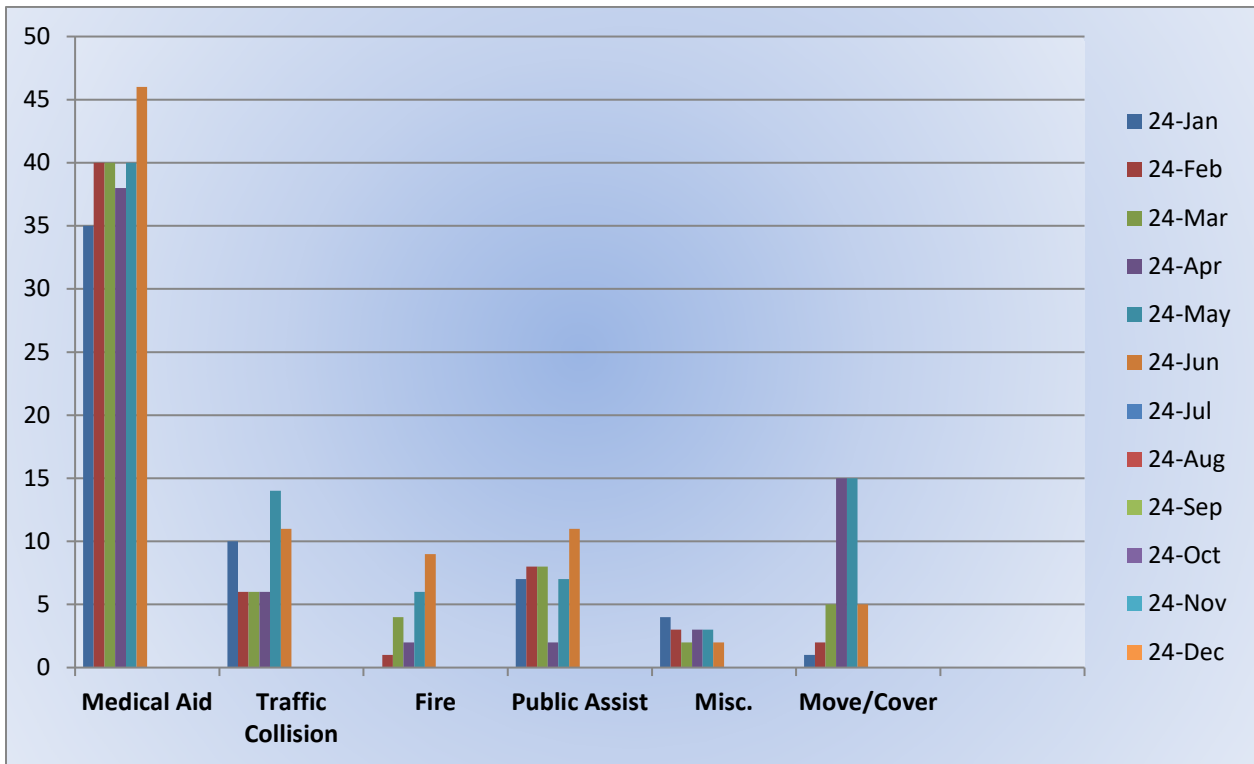
Transfer- 0

Misc- 0

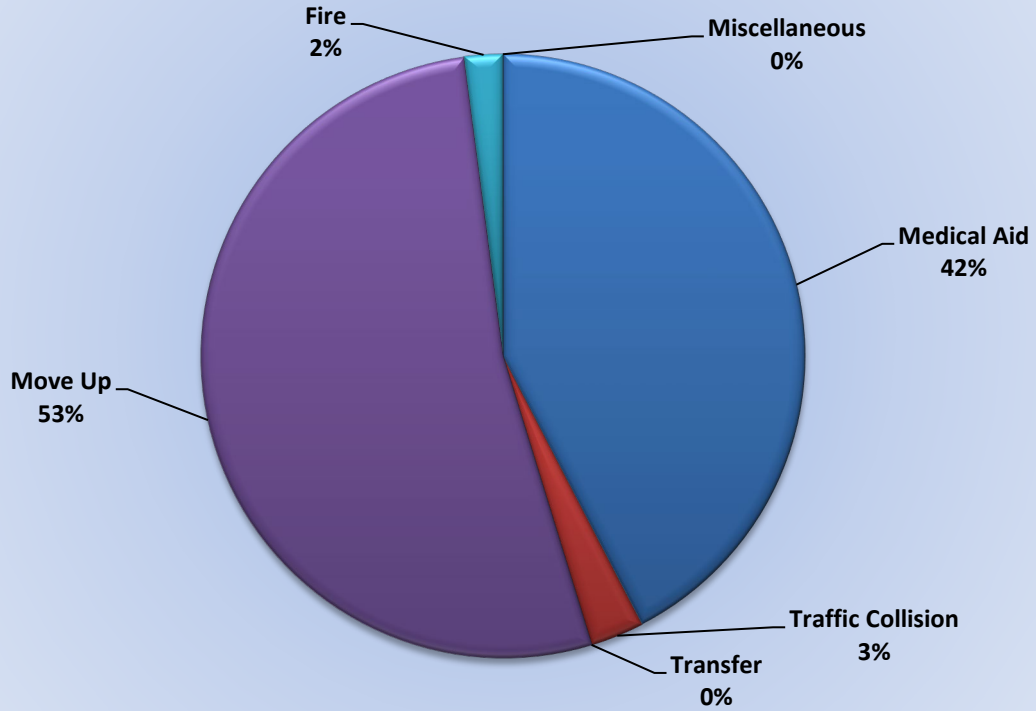
Move/Cover - 128



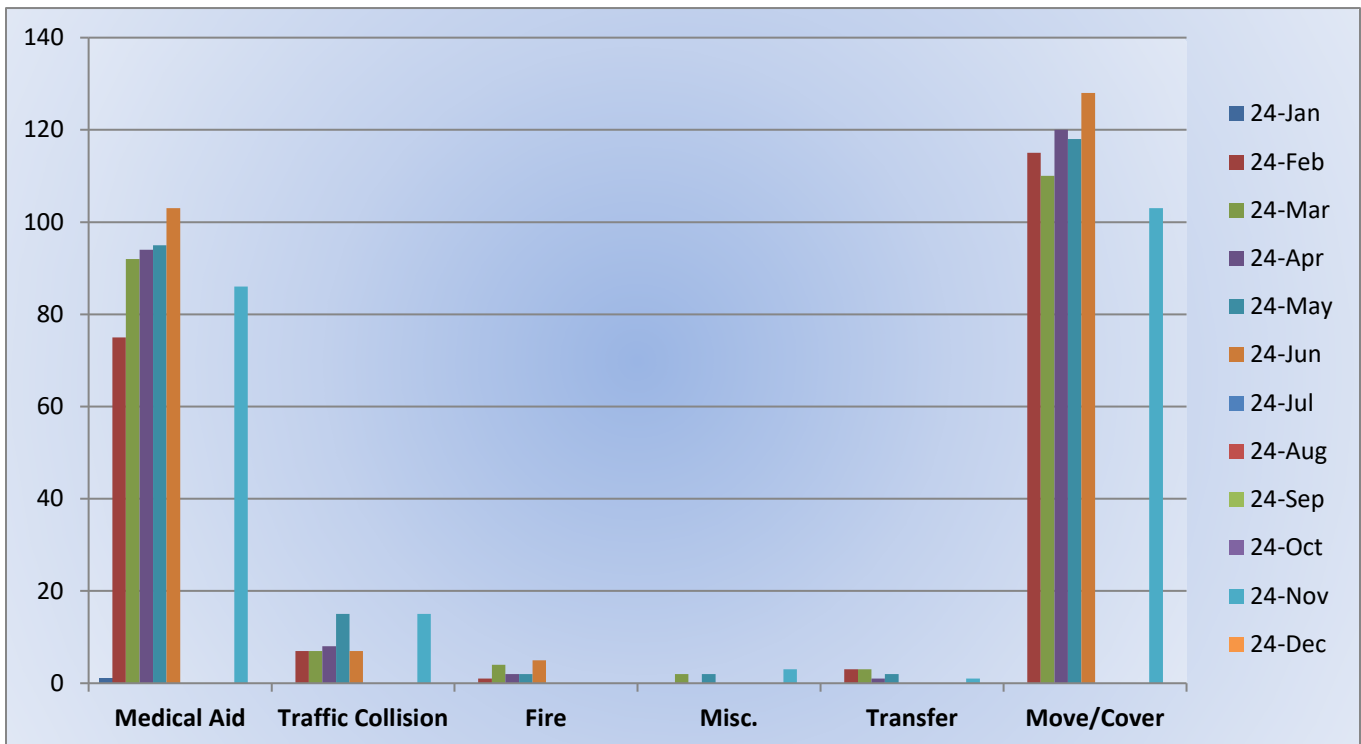
E19 Monthly Statistics Comparison



Response Breakdown June 2024



M19 Monthly Statistics Comparison





El Dorado County Fire Protection District

Station 25 Run Review June 2024

ENGINE 25: 292 Total Calls

Medical Aid- 214

Fire- 13

Traffic Collision- 23

Public Assist- 15

Misc- 25

Move/Cover - 2

MEDIC 25: 304 Total Calls

Medical Aid- 248

Fire- 3

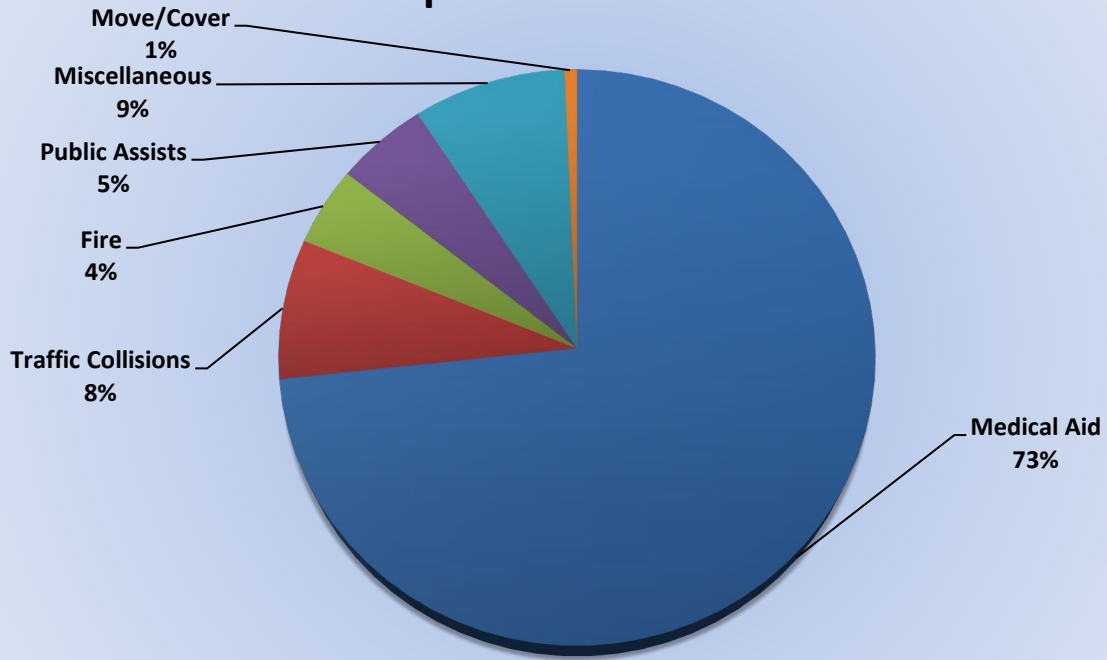
Traffic Collision- 14

Transfer- 7

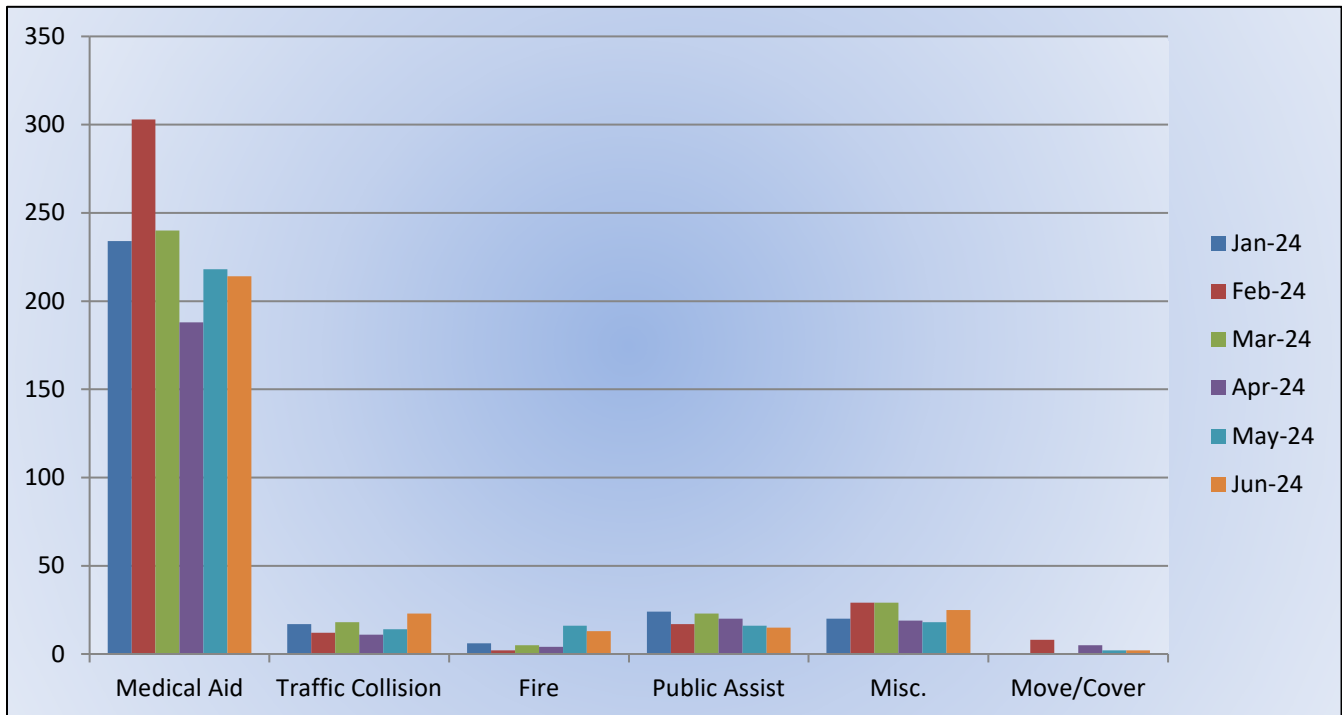
Misc- 2

Move/Cover – 30

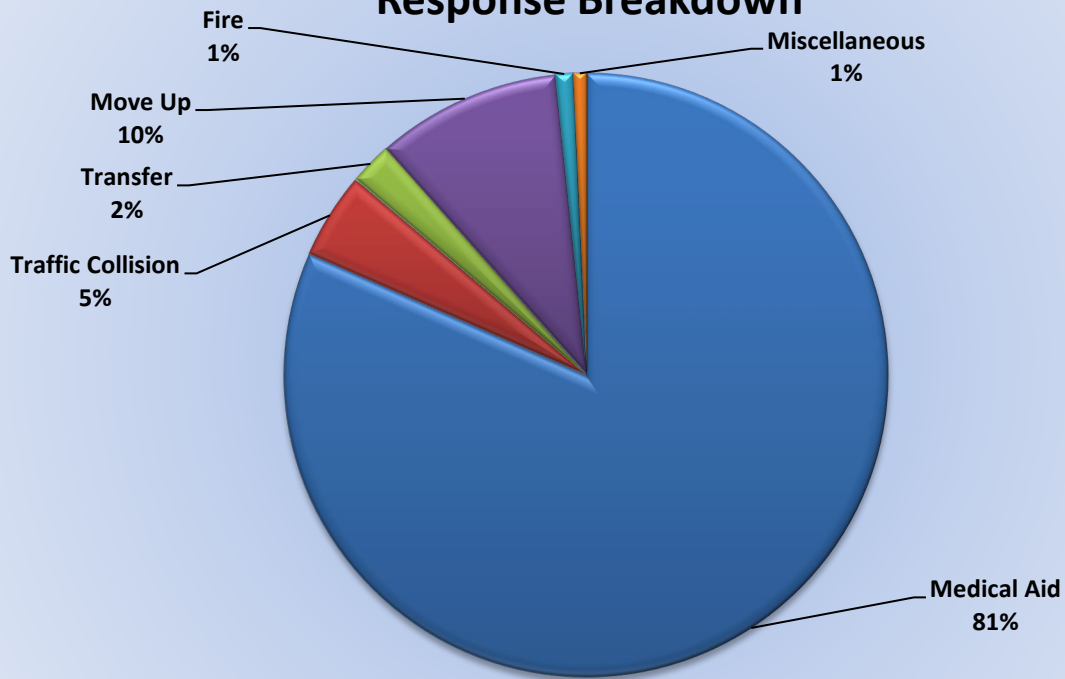
Response Breakdown



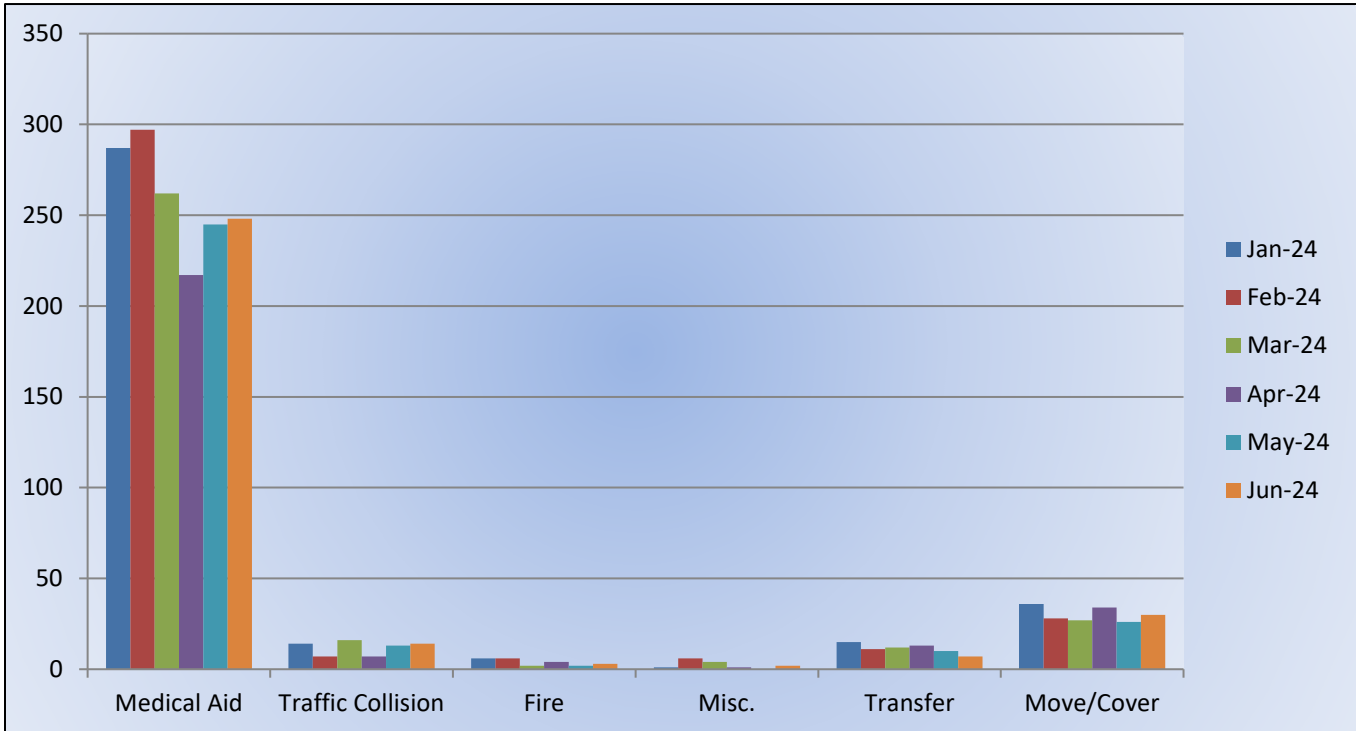
E25 Monthly Statistics Comparison



Response Breakdown



M25 Monthly Statistics Comparison





El Dorado County Fire Protection District

Station 28 Run Review June 2024

ENGINE 28: 139 Total Calls

Medical Aid - 84

Fire - 14

Traffic Collision - 9

Public Assist - 14

Misc - 2

Move/Cover – 16

MEDIC 28: 274 Total Calls

Medical Aid- 204

Fire- 8

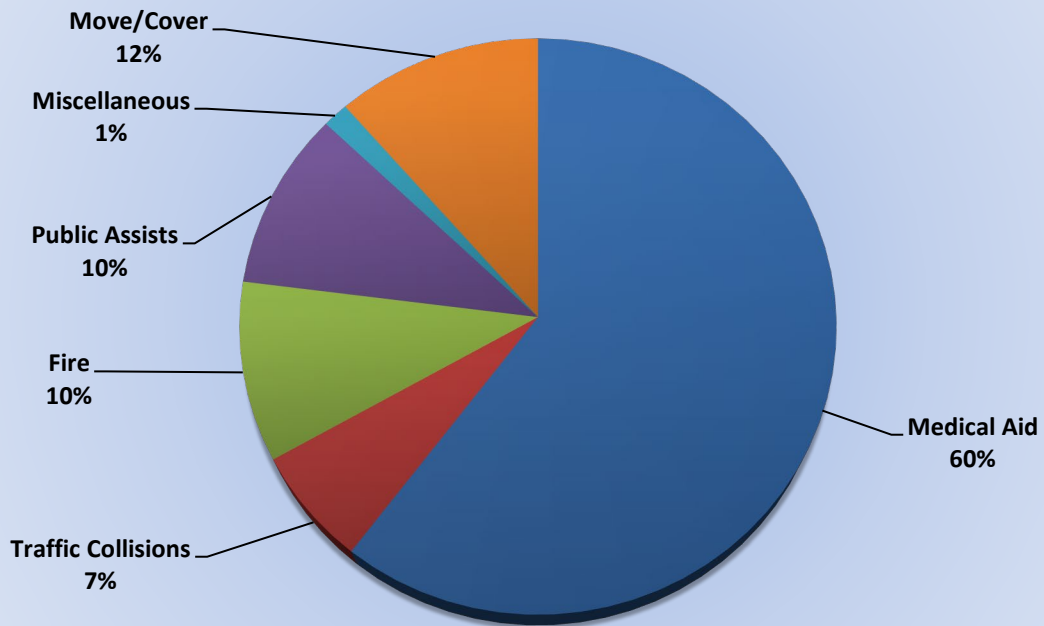
Traffic Collision- 16

Transfer- 2

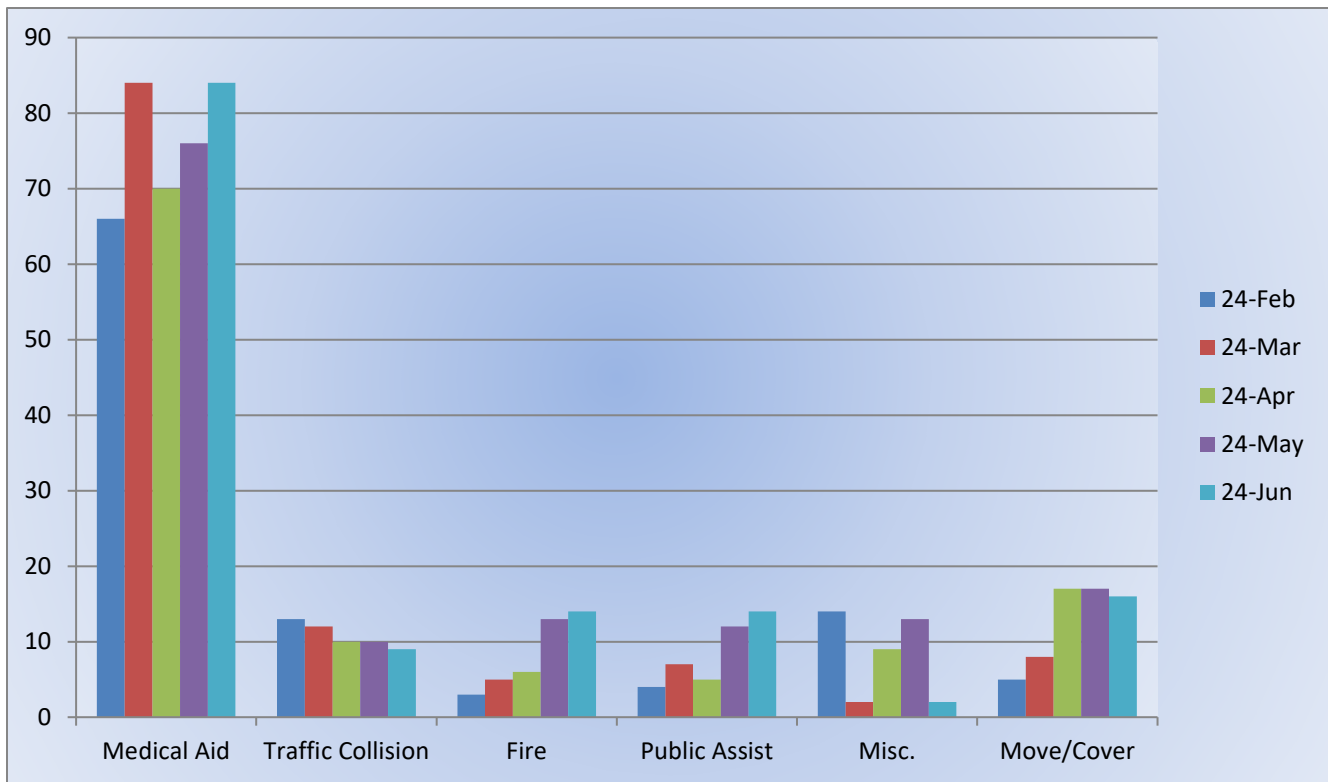
Misc- 2

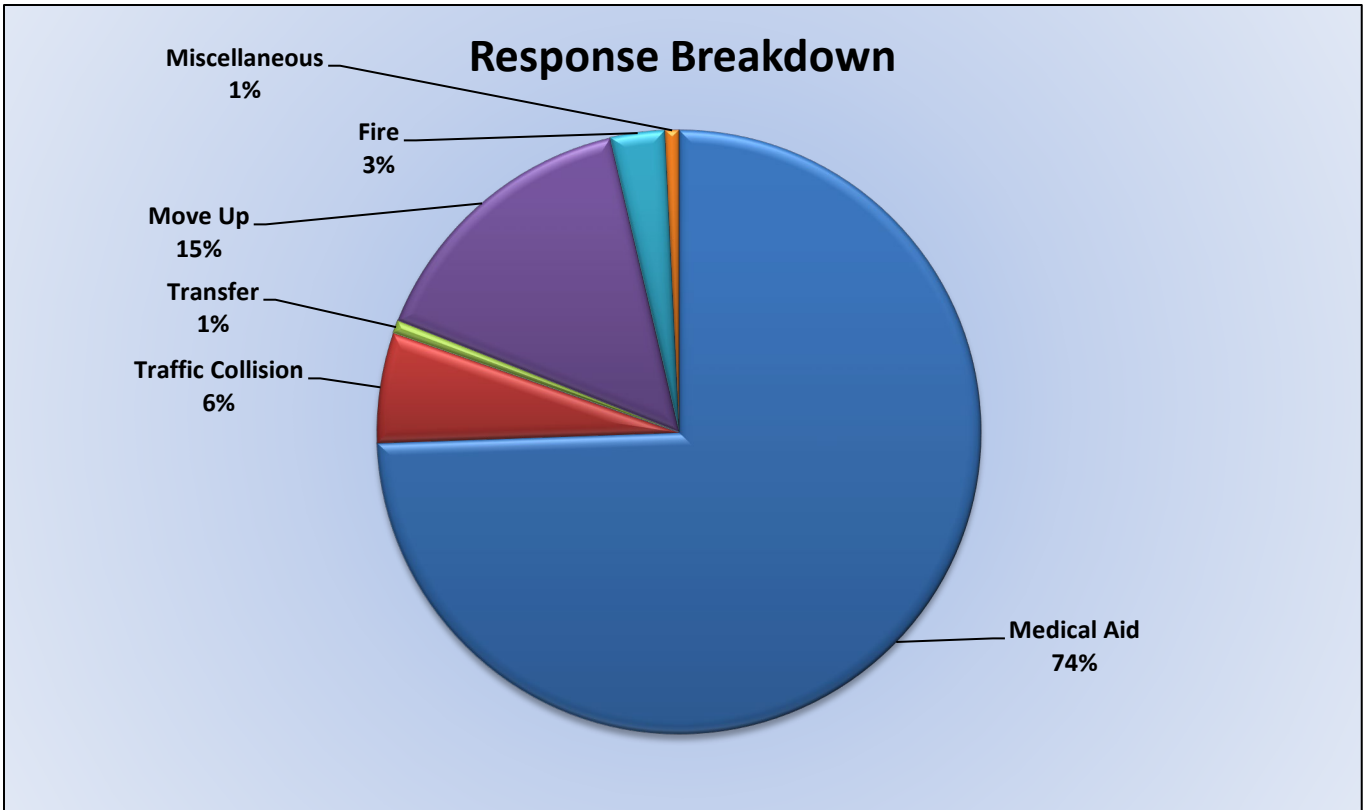
Move/Cover – 42

Response Breakdown

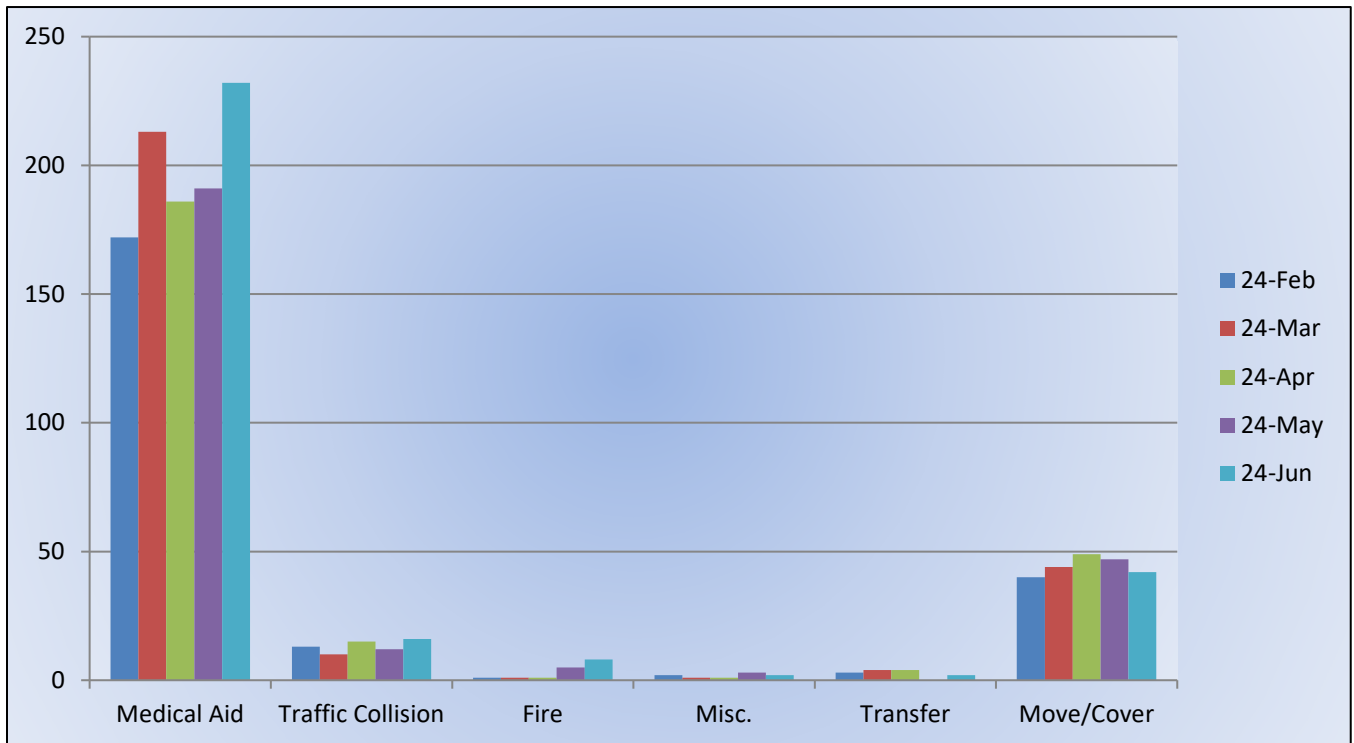


E28 Monthly Statistics Comparison





M28 Monthly Statistics Comparison





El Dorado County Fire Protection District

Station 72 and Medic 49 Run Review June 2024

ENGINE 72: Total Calls 53

Medical Aid – 32

Fire – 6

Traffic Collision – 5

Public Assist – 4

Misc – 6

Move/Cover – 0

MEDIC 49: Total Calls 276

Medical Aid – 202

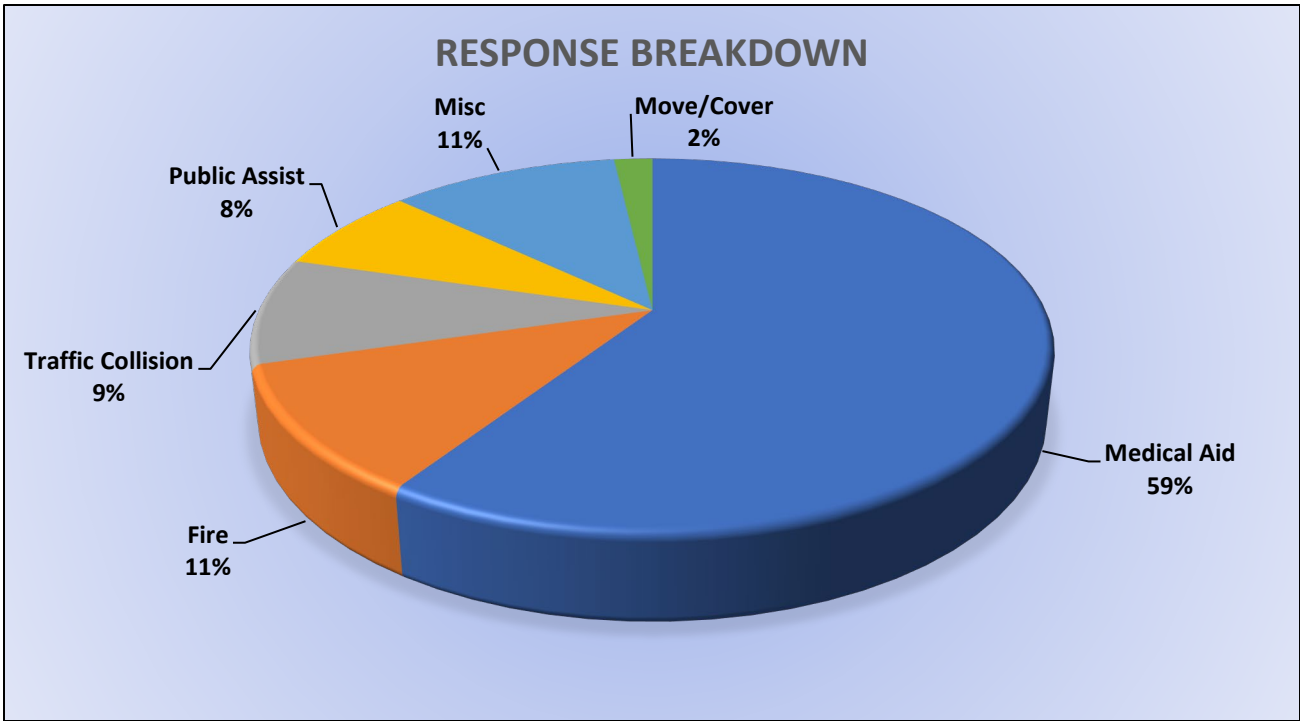
Fire – 4

Traffic Collision – 23

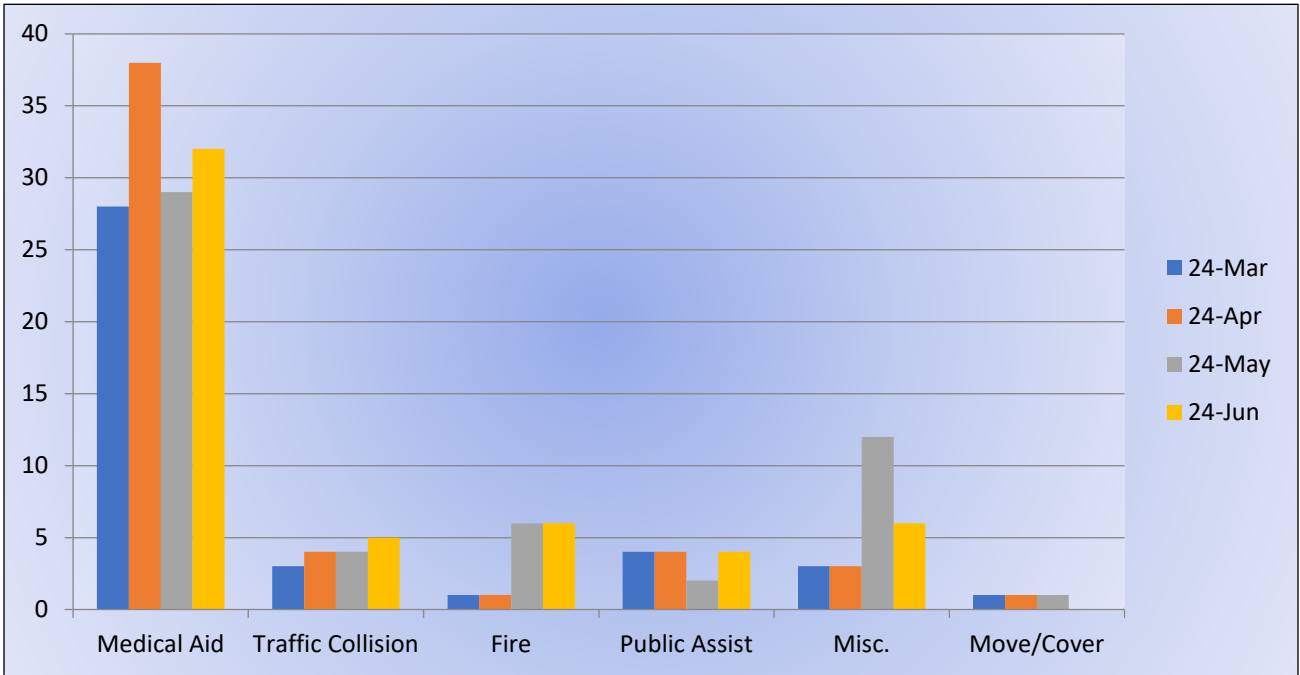
Transfer – 8

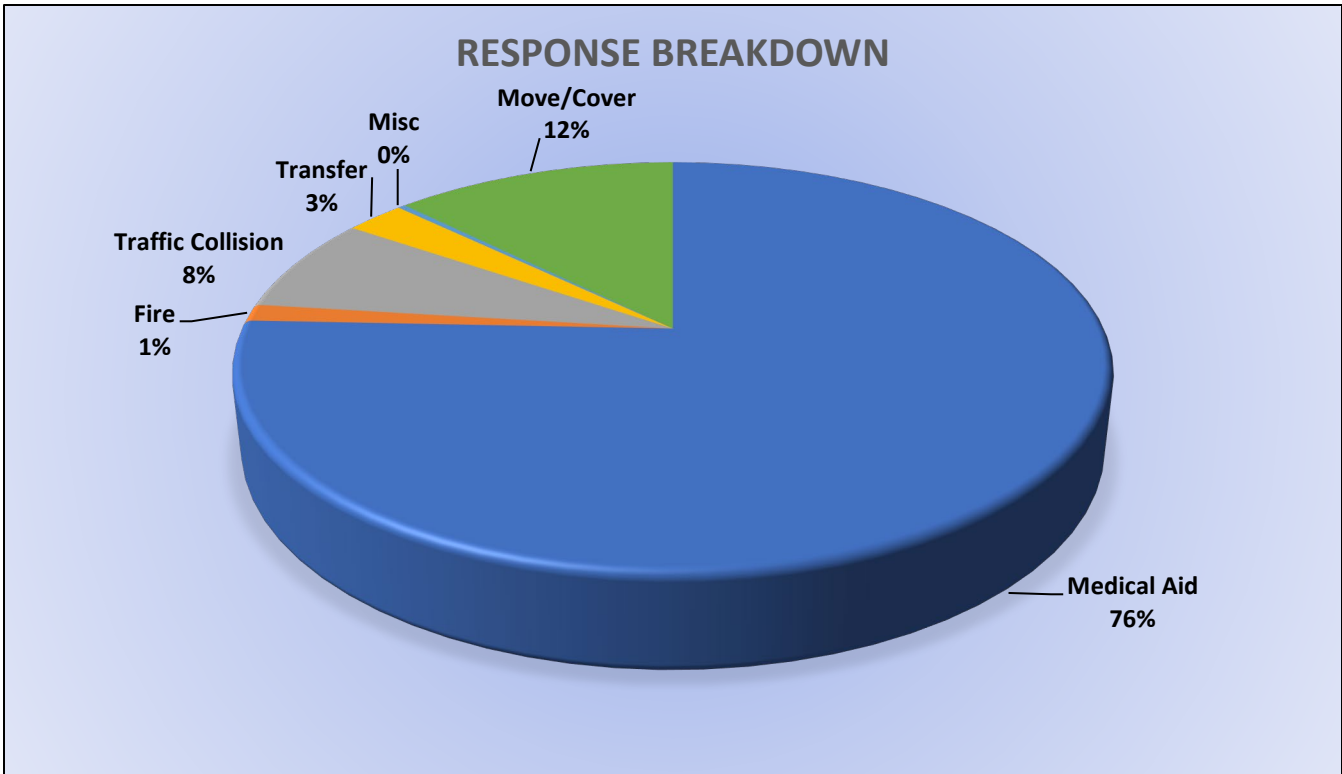
Misc – 1

Move/Cover – 38



E72 Monthly Statistics Comparison





M49 Monthly Statistics Comparison

